



**Extension**

UNIVERSITY OF WISCONSIN-MADISON  
DANE COUNTY

# DANE COUNTY REENTRY RESOURCES

<https://finances.extension.wisc.edu/reentry-ready-resources>



**Reentry Ready**  
FOCUS ON FINANCES

---

An EEO/AA employer, University of Wisconsin-Madison Division of Extension provides equal opportunities in employment and programming, including Title VI, Title IX, the Americans with Disabilities Act (ADA) and Section 504 of the Rehabilitation Act requirements.

January 2024	This guide provides resources throughout Dane County that may be helpful for those re-entering into the community. All information gathered in this guide was found via online searches or contacts who are connected to the resources.
--------------	---

Food Resources ..... 2

Housing Resources ..... 11

Education Resources ..... 18

Employment Resources ..... 25

Healthcare Resources.....41

Resources for Substance Use Disorders ..... 52

Social Support Resources..... 63

## Food Resources

---

A list of food assistance contacts that can aid you throughout Dane County. A full list of locations in the Dane County area food pantry network can be found through the Community Action Coalition at this [link](#).

### Grace Episcopal Church

*The Grace Church Food Pantry has been a welcoming place for the hungry on the Capitol Square for over 45 years. Although housed at Grace Church, the pantry has its own budget and relies on federal and state funding and donations from community members to fill the shelves with food week after week.*

**Address:** 116 W Washington Ave, Madison



### Contact Information:

- (608) 255-5147
- Website: <http://www.gracechurchmadison.org/grace-food-pantry>

### Hours of Operation:

Tuesday	1:00PM-3:00PM
Wednesday	1:00PM-3:00PM
Thursday	1:00PM-3:00PM
Saturday	10:00AM-12:00PM

### Important Information:

- Please bring a form of identification for each household member and proof of Dane County address.
- Grace Emergency Food Pantry provides groceries based on documented family size and product availability.
- Guests may visit once per week.

- As a courtesy to our volunteers, please arrive at least 15 minutes before closing time. Late arrivals will not have access to a full choice menu.
- We are not a meal site, nor do we provide case management service.

## The Beacon

*The Beacon provides a safe shelter for people who are homeless 7 days a week from 8-5. The facility offers the following free services: Light breakfast, coffee, daily lunch, private showers & restrooms, laundry (drop off – same day service), Mail Center, phones, copier & fax, day storage, preventative healthcare, private family areas, referrals for mental health counseling, referrals to case managers, and transportation.*

**Address and Location:** 615 E Washington Ave, Madison



### Contact Information:

- (608) 826-8040
- Website: <https://catholiccharitiesofmadison.org/the-beacon/get-help/>

<b>Hours of Operation:</b>	Breakfast	Lunch
Monday	8:00AM-9:00AM	12:00PM
Tuesday	8:00AM-9:00AM	12:00PM
Wednesday	8:00AM-9:00AM	12:00PM
Thursday	8:00AM-9:00AM	12:00PM
Friday	8:00AM-9:00AM	1:00PM
Saturday	8:00AM-9:00AM	12:00PM
Sunday	8:00AM-9:00AM	12:00PM

### Important Information:

- Enter at the back of the building on East Main Street.

## The River Food Pantry

*The River is South Central Wisconsin's busiest food pantry. Services include free groceries and freshly prepared meals for pickup or delivery, online grocery orders, mobile meals, and emergency food lockers. The River also redistributes rescued food and resources to local partners to increase access while minimizing waste.*

**Address and Location:** 2201 Darwin Rd., Madison



### Contact Information:

- (608) 442-8815
- Website: <https://www.riverfoodpantry.org/>

<b>Hours of Operation:</b>	<u>Curbside Pickup</u>	<u>Free Meals</u>
Tuesday	9:30AM-3:00PM	5:00PM-6:15PM
Wednesday	12:00PM-6:00PM	
Thursday	9:30AM-3:00PM	5:00PM-6:15PM
Friday	10:00AM-3:00PM	5:00PM-6:15PM

### Important Information:

- Clients can pick up free curbside groceries from The River once a week. The River does not allow clients inside the facility. Instead, volunteers and staff will load groceries into people's vehicles.
- If you are visiting The River for the first time...All you need to bring is an ID for the head of the household. You'll receive an emailed link to fill out full registration for the full household. If you need assistance with the form, give us a call at (608) 442-8815 ext. 0 and we will be happy to pre-register you over the phone. Then we'll ask that you bring in a piece of mail (proof of address) and a form of identification for each household member on your next visit.
  - <https://www.riverfoodpantry.org/river-card-registration-form/>
  - Please bring an ID each time you come for groceries.
- You can pick up groceries once a week. A "week" at The River starts on Tuesday and ends on Friday. You can pick up groceries one time during that period.
- FAM (Family At-Home Meals) serves freshly prepared to-go meals Tuesday–Friday. You are welcome to come all 4 days to pick up meals

## Luke House

*Volunteers from Madison-area churches provide, prepare, and serve each of the meals. The volunteers also sit down and eat with the guests — this provides a sense of community and fellowship, and it's one of the things that makes Luke House special.*

**Address and Location:** 310 S. Ingersoll St., Madison



### Contact Information:

- (608) 256-6325
- Website: <https://www.lukehousemadison.org/>

### Hours of Operation:

Monday	11:30AM-12:30PM	5:45PM-6:00PM
Tuesday	11:30AM-12:30PM	5:45PM-6:00PM
Wednesday	11:30AM-12:30PM	5:45PM-6:00PM
Thursday	11:30AM-12:30PM	5:45PM-6:00PM
Sunday		5:45PM-6:00PM

### Important Information:

- Every person who comes for a meal is welcomed, without regard to race, sex, age, color, national origin, religious preference, handicap or income.

## Catholic Multicultural Center

*The Catholic Multicultural Center (CMC) is a social service agency on Madison's South side. All are welcome to utilize the programs and services offered by the Center, which are designed to help our brothers and sisters in need through meeting basic needs and providing opportunities for educational and professional growth.*

**Address and Location:** 1862 Beld St., Madison



### Contact Information:

- (608) 661-3512
- Website: <https://cmcmadison.org/>

<b>Hours of Operation:</b>	<u>Food Pantry</u>	<u>Free Meal</u>
Monday		4:00PM-5:00PM
Tuesday	1:30PM-3:30PM	4:00PM-5:00PM
Wednesday		4:00PM-5:00PM
Thursday	10:30PM-12:00PM	4:00PM-5:00PM
Friday		4:00PM-5:00PM

### Important Information:

- The Catholic Multicultural Center food pantry is open to all Dane County residents who need food assistance. If you live outside of Dane County, [please use 2-1-1](#) to find a pantry near you.
- Each family can use the food pantry as much as once per week. Guests can shop the pantry on a first-come, first-served basis. All who come during pantry hours will be served.
- First-time registrants will be asked for: full name, identification, proof of address, and the name and birth date of each household member.
- The Catholic Multicultural Center serves dinner every single weekday, year-round. All are welcome to enjoy a hot homecooked meal in community with one another in the lower level of the CMC. No need to register; simply come anytime during mealtime. Food is prepared fresh each day by volunteers and CMC staff. Guests have the option to eat in the CMC dining room or to take their food to-go.



**First United Methodist Church** *First United Methodist Church in downtown Madison extends help to people in need through their Hope's Home Ministries focused on helping the homeless and individuals living in poverty. Their history includes being the first church in downtown Madison, Wisconsin and a long history of serving as a place where the homeless feel at home, receive supportive, caring connections and help with food through the Food Pantry and meal programs.*

**Address and Location:** 203 Wisconsin Ave., Madison



**Contact Information:**

- (608) 256-9061
- Website: <https://downtownforgood.org/>

**Hours of Operation:** Free Meal

Wednesday 9:00AM-9:30AM

**Important Information:**

- An informal worship and support gathering is held following the Community Breakfast on Wednesdays (9:45AM-10:15AM).

### **St. Mark's Lutheran Church**

*All are welcome! Hot meals are served in-person or as carry out. Guests enter at the southwest entrance by St. Mark's playground. Physical distancing is maintained. Please wear a face mask. If you don't have one, we will provide one.*

**Address and Location:** 605 Spruce St., Madison



### **Contact Information:**

- (608) 256-8463
- Website: <http://stmarksmadison.org/friday-meal.aspx>

### **Hours of Operation:** Free Meal

Friday            12:00PM-1:00PM

### **Important Information:**

- All are welcome! Hot meals are served in-person or as carry out. Guests enter at the southwest entrance by St. Mark's playground. Physical distancing is maintained. Please wear a face mask. If you don't have one, we will provide one.

## Wil-mar Neighborhood Center

*At Wil-Mar, we're proud to host a weekly food pantry, nutritious and no-cost community meals, cultural movement programs, wellness and fitness programs, and so much more!*

**Address and Location:** 504 S Brearly St, Madison, WI 53703



### Contact Information:

- (608) 257-4576
- Website: <https://wil-mar.org/services>

### Hours of Operation: Free Meal

Free Meal Saturday 11:00AM-1:00PM

Food Pantry Wednesday 9:00AM-12:00PM

### Important Information:

- Open Wednesdays from 9 am to 12 pm for our weekly food pantry. Some fresh fruit/veggies, bread + pastries, pre-cooked meals, and frozen meats available.

### Other Food Resources

- [https://www.publichealthmdc.com/documents/food\\_resource\\_guide\\_eng.pdf](https://www.publichealthmdc.com/documents/food_resource_guide_eng.pdf)
- <https://svdpmadison.org/program/food-pantry/>
- <https://www.secondharvestsw.org/find-food-near-you/>

## Housing Resources

---

A list of housing-related assistance contacts that can help you find a place to stay in Dane County.

### **Porchlight – Men's Emergency Drop in Shelter**

*Provides emergency overnight shelter to male-identified individuals over the age of 18. Guests receive two meals per day, personal hygiene supplies, access to showers and bathrooms, and case management services.*

**Address and Location:** 2002 Zeier Road, Madison, WI 53704



### **Contact Information:**

- (608) 416-1446
- Website: <https://porchlightinc.org/mens-emergency-shelter/>

### **Hours of Operation:**

Monday	5:00PM-8:00AM
Tuesday	5:00PM-8:00AM
Wednesday	5:00PM-8:00AM
Thursday	5:00PM-8:00AM
Friday	5:00PM-8:00AM

### **Important Information:**

- Intake hours are 5:00PM-8:30PM.
- Guests will pass through security screening – weapons, drugs, alcohol not permitted.
- Prochlight provides direct shuttle transportation from the Beacon stay shelter (615 E Washington Ave) to the Zeier Road overnight shelter between 4:15PM and 4:45PM daily and from the Zeier Road shelter back to The Beacon between 7:15AM and 7:30 AM every morning.

## The Salvation Army of Dane County

*Emergency drop in shelter for non-male identifying individuals experiencing homelessness.*

**Address and Location:** 630 E Washington Ave, Madison, WI 53703



### Contact Information:

- Phone number to reserve a shelter bed: (608) 250-2226
- Shelter cell phone: (608) 513-2392
- Shelter reception desk: (608) 250-220
- Full Information Guide: [https://s3.amazonaws.com/usc-cache.salvationarmy.org/c4d8a41d-c0fd-4685-8416-0a1739430488\\_Women%27s+Shelter+Info+Sheet+---TSA+2022.pdf](https://s3.amazonaws.com/usc-cache.salvationarmy.org/c4d8a41d-c0fd-4685-8416-0a1739430488_Women%27s+Shelter+Info+Sheet+---TSA+2022.pdf)
- Website: <https://centralusa.salvationarmy.org/danecounty/>

### Hours of Operation: Intake/Check-In

Monday	5:00PM-8:30PM
Tuesday	5:00PM-8:30PM
Wednesday	5:00PM-8:30PM
Thursday	5:00PM-8:30PM
Friday	5:00PM-8:30PM

### Important Information:

- Guests with employment or previously scheduled appointments who cannot arrive during intake hours must reserve a bed for late entry by calling the Women's Shelter line at 608-250-2226 before 5:00PM on each day of late entry.
- Nurse screens are available to everyone each night.
- All guests and staff must wear face coverings at all times.
- Visitors are not allowed in buildings or on property.
- Guests must be in the building by 8:30 PM.

## Urban League of Greater Madison

*Offer services for job seekers, employers, homeownership, parent support, and youth programs.*

**Address and Location:** 2222 S Park St STE 200, Madison, WI 53713



### Contact Information:

- (608) 729-1200
- Website: <https://ulgm.org/>

### Hours of Operation:

Monday	9:00AM-5:00PM
Tuesday	9:00AM-5:00PM
Wednesday	9:00AM-5:00PM
Thursday	9:00AM-5:00PM
Friday	9:00AM-5:00PM

### Important Information:

- Offers financial and homebuyer education workshops.
- Offers one-on-one counseling to ensure families and individuals are well-informed and equipped to make housing decisions.

## Coordinated Entry Homeless Services: The Beacon

*Assesses housing needs and vulnerability to refer individuals to specific housing programs in Dane County.*

**Address and Location:** 615 E Washington Ave, Madison, WI 53703



### Contact Information:

- (608) 826-8019
- Website: <https://www.danecountyhomeless.org/coordinated-entry>

<b>Hours of Operation:</b>	<u>Walk-In Hours</u>	<u>Office Hours (RM 207)</u>
Monday	9:00AM-12:00PM	1:00PM-4:00PM
Tuesday	9:00AM-12:00PM	1:00PM-4:00PM
Wednesday	9:00AM-12:00PM	1:00PM-4:00PM
Thursday	9:00AM-12:00PM	1:00PM-4:00PM
Friday	9:00AM-12:00PM	1:00PM-4:00PM

### Important Information:

- Staff monitor messages and return phone calls within 24 business hours.
- Coordinated Entry Homeless Services hours are from 8:30AM-4:00PM.

## **Tenant Resources Center**

*Provides information on rental rights, eviction prevention resources, housing mediation services, homeless services, and community education.*

**Address and Location:** 2510 Winnebago St, Madison, WI 53704



### **Contact Information:**

- (608) 257-0006
- Website: <https://www.tenantresourcecenter.org/>

### **Hours of Operation:**

Monday	9:00AM-6:00PM
Tuesday	9:00AM-6:00PM
Wednesday	9:00AM-6:00PM
Thursday	9:00AM-6:00PM
Friday	9:00AM-6:00PM

### **Important Information:**

- For Dane County residence outside of Madison contact Urban Triage – 608-299-4128
- For City of Madison residents contact Community Action Coalition – 608-237-1255
- For Dane County residents with an Eviction Court Date contact Tenant Resource Center – 608-257-006 ext 7



## **Fair Housing Center of Greater Madison**

*Provides possible legal solutions to fair housing complaints and investigates alleged housing discrimination.*

**Address and Location:** 1574 W Broadway #200, Madison, WI 53713



### **Contact Information:**

- (608) 257-0853
- Website: <https://www.communityshares.com/our-members/fairhousingwisconsin/>

### **Hours of Operation:**

Monday	9:00AM-4:30PM
Tuesday	9:00AM-4:30PM
Wednesday	9:00AM-4:30PM
Thursday	9:00AM-4:30PM
Friday	9:00AM-4:30PM

### **Important Information:**

- Conducts intake and investigations of housing discrimination complaints.

## **Eviction Defense Clinic**

*Provides free legal representation for eviction cases, housing law education, and client advocacy.*

**Address and Location:** 744 Williamson St, Madison, WI, 53703



### **Contact Information:**

Main Phone Line: 608-890-0678

Direct Phone Line: 608-265-1300

Fax number: 608-265-3732

Website: <https://law.wisc.edu/eji/evictiondefense/>

### **Hours of Operation:**

Monday	9:00AM-5:00PM
Tuesday	9:00AM-5:00PM
Wednesday	9:00AM-5:00PM
Thursday	9:00AM-5:00PM
Friday	9:00AM-5:00PM

### **Important Information:**

- Provides free legal representation to residents of Dane County that have an eviction case currently in court.
- You must have a case number to leave a message.
- Can find your case number: <https://wcca.wicourts.gov/case.html>

## Other Housing Resources

- Energy Services, <https://esiwi.com/>
- Briarpatch Youth Services, <https://www.briarpatch.org/programs/youth-and-family-services/youth-homelessness/>
- JustDane Healing House, <https://justdane.org/healing-house/>
- YWCA Madison, <https://www.ywcamadison.org/>
- The Road Home, <https://trhome.org/stable-housing/>
- Kabba Recovery Services, <https://www.kabbarecoveryservices.org/>

## Education Resources

---

This section provides resources for those residing in Dane County who wish to further their education after incarceration.

### **Department of Corrections Education Services**

*The DOC is a "Local Education Agency," which can be defined as a public authority legally recognized as an administrative agency for public elementary or secondary education. Within the DOC, the Division of Adult Institutions offers Adult Basic Education (ABE) and Career Technical Education (CTE/Vocational) programs at 18 correctional institutions and nine correctional centers for eligible inmates who are identified as having an academic or vocational need.*

**Address and Location:** PO Box 7925, Madison, WI 53704

### **Contact Information:**

- (608) 240-5164
- Website: <https://doc.wi.gov/Pages/AboutDOC/AdultInstitutions/EducationServices.aspx>

**Important Information:**

- The ABE program includes General Education Development (GED); High School Equivalency Diploma (HSED); and English as a Second Language (ESL) classes. The CTE/Vocational Program includes 23 vocational areas of study, with 13 possible apprenticeship opportunities. As of July 2016, the DOC has added post-secondary educational opportunities for associate and bachelor's degree programs, in collaboration with the state's technical college system and four-year colleges and universities. For more information on ABE and CTE/Vocational programs, please see *Opportunities and Options Resource Guide* on the website.
- Screenings and assessments intended to evaluate an inmate's educational literacy levels and needs are completed as part of DAI's overall Assessment and Evaluation for Primary Education.
  - Adult Basic Education (ABE) Programs
  - English as a Second Language
  - General Education Development (GED)
  - High School Equivalency Diploma (HSED)
  - Career Technical Education (CTE)/Vocational Programs
  - Auto Maintenance
  - Barbering and Cosmetology
  - Braille Transcription
  - Building Maintenance and Construction
  - Cabinetry and Cabinet Making
  - Commercial Bakery
  - Computer-Assisted Drafting
  - Computer Help Desk
  - Computer Literacy
  - Computer Numerical Controls
  - Culinary Arts and Food Service
  - Custodial Services
  - Industrial Maintenance Mechanics
  - Horticulture
  - Institution Food Production
  - Machine Tool Operations
  - Masonry
  - Motorcycle, Marine, and Outdoor Products
  - Multi-Operational Aide
  - Office Assistant/Aide
  - Office Software Applications

- Printing
- Welding

## Madison College (also known as Madison Area Technical College)

### Contact Information:

- (608) 243-4199
- Email: [hsc@madisoncollege.edu](mailto:hsc@madisoncollege.edu)
- Website: <https://madisoncollege.edu/academics/high-school-completion/ged-hsed/steps>

### Important Information:

- Welcome Session
  - Attend the welcome session in person or online
  - Sign up for a welcome session by calling 608.243.4199 or schedule your virtual welcome session online.
  - At the Welcome Session you will:
    - Receive general information about our program
    - Create your Madison College Username/Password
    - Register for GED/HSED Intro Class
    - Complete TABE Assessment. Please allow 2.5 hours for the test.
- Complete the welcome session prior to scheduling your TABE test.
- Take the Test In-Person: Attend an open testing session on Monday or Thursdays at the Goodman South Campus, Room 127. Arrive between 9-11:00 am or 2-6:00 pm to allow enough time for testing.
- Demographic Information
  - Sign-in to your Madison College student portal
  - Under Communications select the "To do List" and complete the Demographic Info Form
- GED/HSED Intro Class: This course introduces you to the high school completion options in Wisconsin.
  - During this class you will:
    - Create GED.com account
    - Review GED/HSED Options in Wisconsin
    - Complete Career Assessment
    - Complete an Academic Plan
    - Register for Courses (if needed)
    - Meet with your assigned Advisor
    - Receive information about the Student One Card
    - Complete Employability Skills Requirements:
      - Complete Employability Skills 3 Curriculum at Madison College

- Provide High School Transcript with a completed employability skills course

## List of Dane County Libraries

### Address and Location:

- [Belleville Public Library](#): 130 South Vine Street Belleville, WI
- [Black Earth Library](#): 1210 Mills Street Black Earth, WI
- [Cambridge Community Library](#): 200 Spring Street Cambridge, WI
- [Central Library](#): 201 West Mifflin Street Madison, WI
- [DeForest Area Public Library](#): 203 Library Street DeForest, WI
- [Deerfield Public Library](#): 12 West Nelson Street Deerfield, WI
- [Demco Inc](#): 500 East North Street DeForest, WI
- [Fitchburg Public Library](#): 5530 Lacy Road Fitchburg, WI
- [Geology & Geophysics Library](#): 1215 West Dayton Street Madison, WI
- [Goodman South Madison Library](#): 2222 South Park Street Madison, WI
- [Helen C. White Hall](#): 600 North Park Street Madison, WI
- [Interlibrary Loan & Sharing](#): 2109 South Stoughton Road Madison, WI
- [Kurt Wendt Engineering Library](#): 215 North Randall Avenue Madison, WI
- [Law School Library](#): 975 Bascom Mall Madison, WI
- [Legislative Reference Bureau](#): 1 East Main Street Madison, WI
- [Madison Public Library Lakeview Branch](#): 2845 North Sherman Avenue Madison, WI
- [Madison Public Library: Alicia Ashman Branch](#): 733 North High Point Road Madison, WI
- [Madison Public Library: Hawthorne Branch](#): 2707 East Washington Avenue Madison, WI
- [Madison Public Library: Monroe Street Neighborhood](#): 1705 Monroe Street Madison, WI
- [Madison Public Library: Pinney Branch](#): 204 Cottage Grove Road Madison, WI
- [Marshall Community Library](#): 605 Waterloo Road Marshall, WI
- [Mazomanie Free Library](#): 102 Brodhead Street Mazomanie, WI
- [Memorial Library](#): 728 State Street Madison, WI
- [Middleton Public Library](#): 7425 Hubbard Avenue Middleton, WI
- [Mill Pond Public Library](#): 140 Kingston Way Waunakee, WI
- [Monona Public Library](#): 1000 Nichols Road Madison, WI
- [Mount Horeb Public Library](#): 105 Perimeter Road Mount Horeb, WI
- [Oregon Public Library](#): 256 Brook Street Oregon, WI
- [Sequoia Library](#): 4340 Tokay Boulevard Madison, WI
- [South Central Library System](#): 4610 South Biltmore Lane Madison, WI
- [State Historical Society](#): 816 State Street Madison, WI
- [State Law Library](#): 120 Martin Luther King Junior Boulevard Madison, WI



- [Stoughton Public Library](#): 304 South 4th Street Stoughton, WI
- [University of Wisconsin - Libraries, Historical](#): 816 State Street Madison, WI
- [WIS Veterans Museum](#): 30 West Mifflin Street Madison, WI
- [Water Resources Center](#): 1975 Willow Drive Madison, WI
- [Waunakee Public Library](#): 710 South Street Waunakee, WI

**Contact Information:**

- Website: <https://www.linkcat.info/>

**Hours of Operation:** Dependent on location, usually 8:00AM-5:00PM

**Important Information:**

- Library cards are free! Most libraries have free computer use with internet access.

## Other Education Resources

- Literacy Network, <https://www.litnetwork.org/study/>
- Aging & Disability Resource Center,  
<https://daneadrc.org/documents/pdf/Resources/Employment/Free-Job-Search-Assistance-ADRC.pdf>

## Employment Resources

---

This section can aid individuals returning to Dane County in finding employment opportunities upon re-entry to their community.

### Wisconsin Apprenticeship

*Apprenticeship is a post-secondary education, like a college or university. But there's a big difference. Apprentices learn only a portion of their skills in a traditional classroom. They receive most of their training on-the-job, while working for an employer who pays a good wage. Employment is the primary requirement for an apprenticeship - a job must exist in order for the apprentice to be trained. The classroom instruction is usually provided through the Wisconsin Technical College system.*

**Address and Location:** 201 E. Washington Avenue Madison, WI 53703



### Contact Information:

- (608) 266-3131
- Website: <https://dwd.wisconsin.gov/apprenticeship/ra/applicants.htm>

### Hours of Operation:

Monday	7:45AM-4:30PM
Tuesday	7:45AM-4:30PM
Wednesday	7:45AM-4:30PM
Thursday	7:45AM-4:30PM
Friday	7:45AM-4:30PM

*Exceptions: Offices are closed on State holidays which include New Year's Day, Martin Luther King Jr. Day, Memorial Day, Independence Day, Labor Day, Thanksgiving Day, Christmas Eve and Christmas, and New Year's Eve.*

**Important Information:**

- Provides apprenticeship programs and opportunities for youths and adults seeking center exploration and job opportunities.
- How to apply:
  - Explore what occupations and industry sectors fit your interests. You can search what industries are offered in your location and discover the average income offered. Wages may vary depending on the occupation you choose. Most apprentices begin at approximately 50% of the current skilled wage rate. Occupations may provide a periodic step increase every month or 1,040 hours. Apprentice's wages must average 60% of the skilled wage rate during the term of the apprenticeship program.
  - Career seekers must apply directly to a sponsor. Application requirements will vary by occupation and sponsor. Construction registered apprenticeships are sponsored by [local apprenticeship committees](#). All other registered apprenticeships are sponsored by individual employers. To learn more about individual employers, visit our [Featured Sponsors](#).

## **Job Center of Wisconsin**

*Provides guidance for job seekers and employers; Create/Edit Resume or Search Jobs*

**Address and Location:** ONLINE

### **Contact Information:**

- (888) 258-9966
- Email: [jobcenterofwisconsin@dwd.wisconsin.gov](mailto:jobcenterofwisconsin@dwd.wisconsin.gov)
- Website:  
<https://jobcenterofwisconsin.com/Login.aspx?ReturnUrl=%2fPresentation%2fJobSeekers%2fResumeSummary.aspx%3fformat%3dresume&format=resume>

### **Hours of Operation:**

Monday	8:00AM-4:30PM
Tuesday	8:00AM-4:30PM
Wednesday	8:00AM-4:30PM
Thursday	8:00AM-4:30PM
Friday	8:00AM-4:30PM

**Important Information:** For Job Seekers, the Job Center for Wisconsin provides resources to find jobs, create/edit resumes, provide examples of sample resumes, provide resources for unemployment, aids assistance for certain populations, and list several opportunities people have to apprenticeships and training programs.

## **Job Center of Wisconsin: Job Loss Resources**

*We understand that job loss is one of the most challenging times in people's lives. DWD and the public workforce system are here to help. Moving on from a layoff is easier if you have the right information and tools. Explore this page to learn more about important topics.*

**Address and Location:** ONLINE

### **Contact Information:**

- (888) 258-9966
- Email: [jobcenterofwisconsin@dwd.wisconsin.gov](mailto:jobcenterofwisconsin@dwd.wisconsin.gov)
- Website: <https://jobcenterofwisconsin.com/jobloss/#employeeResources>

### **Hours of Operation:**

Monday	8:00AM-4:30PM
Tuesday	8:00AM-4:30PM
Wednesday	8:00AM-4:30PM
Thursday	8:00AM-4:30PM
Friday	8:00AM-4:30PM

### **Important Information:** Important topics for Job Loss Resources

- Rapid Response overview
- Coping with Job Loss
- Unemployment Insurance
- Dislocated Worker Program
- Trade Adjustment Assistance (TAA) program
- Job Center Services
- Job Search tips
- Community Resources
- Health Insurance Information
- Retirement Information
- Financial Planning
- Take Dislocated Worker Survey

## **Jobs that Help**

*As the largest job board focused on nonprofit career opportunities in Wisconsin, we feature numerous opportunities on our [Job Listings](#) at [many different organizations](#). Whether you are an experienced professional or an enthusiastic newcomer, you have come to the right place for opportunities that match your passion and talent.*

**Address and Location:** ONLINE

### **Contact Information:**

- Email: [info@jobsthathelp.com](mailto:info@jobsthathelp.com)
- Website: <https://www.jobsthathelp.com/job-seekers/>

### **Important Information:**

- Browse current job (and internship and board) openings near you in the field you are passionate about.
- Learn about relevant career and professional development events.
- Access career guides and other resources for nonprofit job and internship seekers
- Register and account to:
  - Add your resume to our Resume Bank, privately viewable to hundreds of nonprofit employers in Wisconsin.
  - Bookmark jobs for easy reference later.
  - Set custom job alerts to make sure you don't miss out on the opportunity you are seeking!

## **The Way Out**

*The Way Out was founded by two justice impacted individuals that believe in the power of utilizing difficult past experiences to create an even better future. That's why they decided to create the most felon-friendly second chance employment platform in America.*

**Address and Location:** ONLINE

### **Contact Information:**

- Email: [support@twout.org](mailto:support@twout.org)
- Website: <https://www.thewayouthelps.com/job-seekers/>

### **Important Information:**

- Supports and matches justice involved job seekers with employers who understand the difficult positions they are in and the value of hiring formerly incarcerated employees.
- Free for all job seekers
- All employers are 100% committed to hiring justice-impacted job seekers.



## **UMOS: Building Better Futures**

*Welcome to UMOS, where we have been helping families build better futures for more than a half-century! By partnering with donors, government agencies, businesses, and other nonprofits, UMOS' dedicated team of professionals provides the individualized child development, workforce development, and other social services families need to build the better futures they envision for themselves.*

*UMOS, a non-profit advocacy organization, provides programs and services which improve the employment, educational, health and housing opportunities of under-served populations.*

**Address and Location:** ONLINE; Corporate Headquarters (2701 S. Chase Avenue, Suite B Milwaukee, WI, 53207)

### **Contact Information:**

- [\(414\) 389-6000](tel:4143896000)
- Email: [info@umos.org](mailto:info@umos.org)
- Website: <https://www.umos.org/how-we-help/workforce-development/>

### **Important Information:**

- Offers transitional job programs, social services assistance, child development resources, workforce development and career opportunities.
- UMOS is committed to developing and advancing our nation's workforce through substantial employer engagement, deep community connections, career advancement, human service supports, industry-driven education, and training.
- These programs build the workforce of Illinois, Missouri, and Wisconsin, by building up the capabilities and livelihoods of individuals and families.

## **BIG STEP**

*BIG STEP provides programs and career services with special emphasis on apprenticeship readiness training and tutoring to prepare participants for the necessary apprenticeship qualifying tests they'll face in the skilled trades. Our mission is to enhance the ability of the industry to recruit and develop a diverse, qualified workforce in the construction, manufacturing, and emerging sectors of the regional economy and to make sure everyone has a pathway to a family-supporting career.*

*Mission: Enhance the ability of public and private sector organizations to recruit, develop, and retain a more diverse, qualified workforce in emerging sectors of our vibrant and evolving economy in the region.*

*Vision: Traditionally underrepresented and underemployed people—particularly women and people of color—must have access to education, training, and supportive, equitable placement opportunities*

**Address and Location:** 2829 Perry St, Ste 205 Madison, WI 53713



### **Contact Information:**

- [\(608\) 255-0155](tel:6082550155)
- Email: [southcentral@wrtp.org](mailto:southcentral@wrtp.org)
- Website: <https://wrtp.org/>

### **Hours of Operation:**

Monday	8:00AM-5:00PM
Tuesday	8:00AM-5:00PM
Wednesday	8:00AM-5:00PM
Thursday	8:00AM-5:00PM
Friday	8:00AM-2:00PM
Saturday	By Appointment
Sunday	By Appointment

### **Important Information:**

- Provide access to education and training to connect traditionally underrepresented and underemployed people with manufacturing and skilled trade jobs.

## Dane County Job Center

*The Wisconsin Department of Workforce Development Job Centers works with clients to identify the skills, talents, and training to help clients find a job that best meets their needs. Job service assistance is available for help with job center registration, resumes, cover letters, job applications and unemployment benefits.*

**Address and Location:** 1819 Aberg Ave Madison, WI 53704



### Contact Information:

- (608) 405-4400
- Email: [southcentraljobcenters@dwd.wisconsin.gov](mailto:southcentraljobcenters@dwd.wisconsin.gov)
- Website: <https://www.scwijobs.com/jobseekers>

### Hours of Operation:

Monday	8:00AM-4:20PM
Tuesday	8:00AM-4:20PM
Wednesday	8:00AM-4:20PM
Thursday	8:00AM-4:20PM
Friday	8:00AM-4:20PM

### Important Information:

 This program provides:

- Assistance with searching and applying for jobs online.
- Learn about and sign up for unemployment insurance.
- Develop job hunting skills, such as resumes, cover letters and interview techniques.
- Find the careers that match your talents and skills with career assessments.
- Get qualified for the job you want with education, certification and on-the-job training.
- Take advantage of resources such as Internet, telephone, fax, and photocopying.

## **EmployAbility: Employment and Housing Solutions**

*Employment and Housing Solutions seeks to create partnerships with businesses to create long-lasting and successful employment by focusing on the abilities and strengths of the people we work with. We work to empower people to gain meaningful employment by providing one-on-one job search services tailored to meet their needs, expectations, and goals*

*We are committed to working as hard as you do to ensure goals and long-term successes are made possible by providing one-on-one support throughout the job search process and for a minimum of 90-days after being hired.*

**Address and Location:** 2701 International Lane Suite 105 Madison WI 53704



### **Contact Information:**

- (608) 709-1034
- Email: [info@EmployAbility-llc.com](mailto:info@EmployAbility-llc.com)
- Website: <https://www.employability-llc.com/job-seekers>

### **Hours of Operation:**

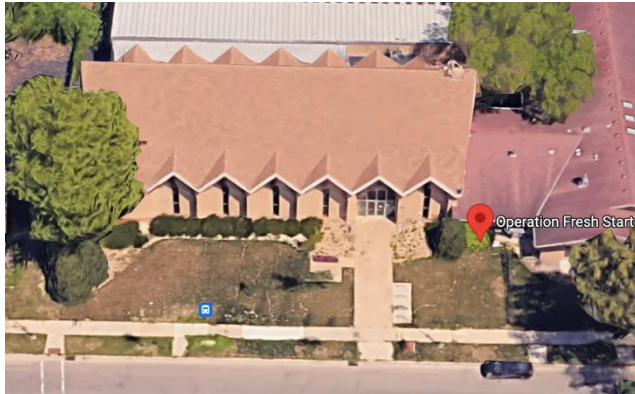
Monday	9:00AM-5:00PM
Tuesday	9:00AM-5:00PM
Wednesday	9:00AM-5:00PM
Thursday	9:00AM-5:00PM
Friday	9:00AM-5:00PM

**Important Information:** Working with EmployAbility has many rewards and benefits for job seekers and employers, including full or partial salary reimbursement, tax credits for all employers who hire EmployAbility clients, assurance that the employee is trained and qualified for the position applying for, and ongoing support from EmployAbility after the hire. Whether you are a job seeker or an employer, you can be assured that EmployAbility: Employment and Housing Solutions, LLC is dedicated to creating fulfilling and successful business relationships.

## Operation Fresh Start – CareerScape

*CareerScape counseling supports you in exploring career options, preparing for employment, and taking the next steps towards achieving your career goals.*

**Address and Location:** 2670 Milwaukee St., Madison, WI 53704



### Contact Information:

- (608) 244-4721
- Email: [info@operationfreshstart.org](mailto:info@operationfreshstart.org)
- Website: <https://www.operationfreshstart.org/careerscape-counseling>

**Important Information:** Young adults can receive assistance with resumes/cover letters, mock interviews, job applications, coordination of job shadows, and more!

- Eligibility: ages 17-24 in Dane County
- Program Outcomes
  - Career Exploration
  - College Assistance
  - Job Readiness
  - Mentorship

## Urban League of Greater Madison – Employment Services

*The Urban League of Greater Madison’s Workforce Development Department seeks to connect job seekers to sustainable employment opportunities. We work to remove barriers that might keep job seekers from gainful employment.*

**Address and Location:** 2222 S. Park Street Suite 200, Madison, WI 53713



### Contact Information:

- (608) 729-1200
- Email: [opportunity@ulgm.org](mailto:opportunity@ulgm.org)
- Website: <https://ulgm.org/employment-programs/for-job-seekers/>

### Hours of Operation:

Monday	9:00AM-5:00PM
Tuesday	9:00AM-5:00PM
Wednesday	9:00AM-5:00PM
Thursday	9:00AM-5:00PM
Friday	9:00AM-5:00PM

**Important Information:** Sign up to receive free career counseling, job leads, resume and cover letter assistance, access to our career academies, referrals to our network of employer partners, and much more. All at no cost!

- Free parking is available on-site.
- We are located on [Metro Bus](#) routes 5, 13, 44, and 48. In addition, we are a short walk from the South Transfer Point with service from routes 4, 5, 13, 16, 18, 40, 48, and 49.

## **Employment Resources, Inc. - Employment Counseling**

*RI provides planning assistance in achieving and maintaining employment by connecting individuals to community resources, providing career exploration and counseling services. ERI provides support to people with disabilities who want to become employed, maintain current employment, increase earnings, or advance in the world of work. Our unique and comprehensive approach connects people to community resources while providing assistance to explore individualized employment goals in a supportive, reflective environment.*

**Address and Location:** 4604 Cottage Grove Rd, Madison, WI 53716



### **Contact Information:**

- (608) 906-2729
- Email: [wanek@eri-wi.org](mailto:wanek@eri-wi.org) (Employment Services Manager)
- Website: <https://eri-wi.org/services/employment/>

### **Important Information:**

We can help you build a foundation for achieving your employment goals including: individualized employment counseling to help you explore employment potential, identifying barriers, stressors, other issues, assessing individual support needs, problem solving, identifying resources and supports to help manage: transportation, personal cares, child care, health concerns, legal issues, development of employment goals, and/or planning for success.

## United Way of Dane County – The HIRE Initiative

*At United Way of Dane County, one of our primary goals is to get more people and families on pathways out of poverty, and we know that employment is a key piece to that puzzle. So, in 2013, we launched the HIRE Initiative – a free program which focuses on helping adults prepare for and find steady employment. By working with 6 local partner agencies and 50 local employers, we've been able to help more than 3,000 people find reliable work in our community!*

**Address and Location:** 2059 Atwood Avenue, Madison, WI 53704



### Contact Information:

- (608) 246-4350
- Email: [writeus@uwdc.org](mailto:writeus@uwdc.org)
- Website: <https://www.unitedwaydanecounty.org/hire/>

### Hours of Operation:

Monday	8:00AM-4:30PM
Tuesday	8:00AM-4:30PM
Wednesday	8:00AM-4:30PM
Thursday	8:00AM-4:30PM
Friday	8:00AM-4:30PM

### Important Information:

In Dane County alone, we know that more than 12,000 people over the age of 25 do not have a high school degree – limiting their annual earning power drastically. We also know that many jobs go unfilled because employers can't find workers with the right qualifications. So, we start with education. Through our partnerships with Centro Hispano of Dane County, Just Dane, Latino Academy for Workforce Development, Urban League of Greater Madison, Literacy Network and YWCA of Madison, we connect participants with the resources they need to earn a diploma and/or go through industry-specific training. We even offer opportunities for paid training hours for folks who are taking time away from their current jobs to gain new skills, and/or for those who cannot afford to wait until they have a job to receive income.



## **AchieveAbilities**

*AchieveAbilities's mission is to empower people to achieve their highest potential by fulfilling employment, financial and personal goals. We aspire to enhance quality of life by focusing on abilities and strengths in ways that are important and meaningful to people and their circles of connection.*

*We provide individualized career coaching and skill development based on your needs  
We work in partnership with various organizations and businesses to provide employment opportunities*

**Address and Location:** 124 Owen Rd. Monona, WI 53716



### **Contact Information:**

- (608) 598-9935
- Website: <https://achieveabilities.net/>

### **Hours of Operation:**

Monday	9:00AM-5:00PM
Tuesday	9:00AM-5:00PM
Wednesday	9:00AM-5:00PM
Thursday	9:00AM-5:00PM
Friday	9:00AM-5:00PM

### **Important Information:** They offer:

- Supported Employment
- Supported Self-Employment
- Day Support
- Resume Development
- Mock Interviews
- Job Preparation
- Soft Skills
- Retention Services

## Other Employment Resources

- Black Men Coalition of Dane County, <https://www.bmcdc.org/employment-housing>
- Centro Hispano, <https://www.micentro.org/employment-services.html>
- Dane County: Department of Human Services, <https://www.danecountyhumanservices.org/Jobs-and-Housing/Job-Center>
- Yahara House, <https://www.yaharahouse.org/copy-of-employment>

## Healthcare Resources

---

This section provides resources for both physical and mental healthcare in Dane County.

### Comprehensive Community Services

*Those enrolled in CCS take control of their treatment and recovery. They work with a team to decide which services and supports will help them reach their goals. These services and supports may include:*

- *Diagnostic tests.*
- *Help to manage medicines.*
- *Job-related skills training.*
- *Peer support.*
- *Personal and/or family psychoeducation.*
- *Physical health monitoring.*
- *Psychotherapy.*
- *Screening and assessment.*
- *Skill growth and refinement.*
- *Substance use treatment.*
- *Wellness management and recovery.*

**Address:** 1202 Northport Dr, Madison, WI 53704



### Contact Information:

- (608) 242-6200

- Fax: (608) 242-6293
- Email: [HumanServices@countyofdane.com](mailto:HumanServices@countyofdane.com)

**Hours of Operation:**

Monday	7:45AM-4:30PM
Tuesday	7:45AM-4:30PM
Wednesday	7:45AM-4:30PM
Thursday	7:45AM-4:30PM
Friday	7:45AM-4:30PM

**Important Information:** CCS is for people who have needs that, if ignored, could lead to being hospitalized in times of crisis. The CCS screening process confirms who is eligible for the program. A tribal nation or county CCS provider completes the screening process.

## **Journey Mental Health Center**

*Journey Mental Health provides services relating to the following areas in clinic-based services, community involvement, and emergency services (not extensive):*

- Adult and behavioral health services
- Child and family services
- Culturally specific: Uljima, Clinica latina
- Family Preservation Program
- Legal Diversion services
- 24/7 Crisis line
- Gateway community support program

**Address:** 25 Kessel Court, Suite 105 [Madison, WI 53711](https://www.journeymhc.org/)



### **Contact Information:**

- Intake: (608) 280-2720
- Crisis: (608) 280-2600
- Website: <https://www.journeymhc.org/>

### **Hours of Operation:**

Monday	8:00AM-7:00PM
Tuesday	8:00AM-7:00PM
Wednesday	8:00AM-7:00PM
Thursday	8:00AM-7:00PM
Friday	8:00AM-5:00PM

### **Important Information:**

- Sliding-fee payment plan.
- Intake Appointments have about a 2 week wait.
- No medications prescribed or provided.

### **Just Dane: Healing House**

*When someone is discharged from the hospital and requires follow-up recuperative care, such care is delivered by home health providers. However, if you have no home, you cannot receive these services. Healing House can be that home, so home health providers can provide follow-up care to individuals as they recuperate. It provides 24/7 recuperative care by medically trained staff and volunteers for up to 28 days (about 4 weeks).*

**Address:** 128 E Olin Ave Suite 202, Madison, WI 53713 (Just Dane main building left image)



### **Contact Information:**

- (608) 256-0906
- Website: <https://justdane.org/healing-house/>

### **Hours of Operation:**

Monday	9:00AM-5:00PM
Tuesday	9:00AM-5:00PM
Wednesday	9:00AM-5:00PM
Thursday	9:00AM-5:00PM
Friday	9:00AM-5:00PM

### **Important Information:**

- For eligibility and registration <https://justdane.org/eligibility-questionnaire/>

**Anesis Therapy/Free Drop ins at MT Zion Counseling Center**

*Anesis Therapy is a counseling center that provides drop-in services. At each location they have a Licensed Substance Abuse Counselor, Crisis Stabilization Case Manager and a Licensed Therapist.*

**Address:**

MT Zion Baptist Church: 2019 Fisher St, Madison, WI, 53713



Anesis West Side Location (Bilingual Services): 815 Forward Drive, Madison, WI 53711



**Contact Information:**

- (608) 268-6530
- Website: <https://anesistherapycenter.com/>

**Hours of Operation:** Mt Zion Baptist Church  
Tuesday 10:00AM-2:00PM  
Thursday 1:00PM-5:00PM

Anesis West Side Location (Bilingual)  
3:00PM-6:00PM

**Important Information:**

- Can attend up to six 30-minute sessions.
- There is Spanish support at Anesis West Side.

## Our Lady of Hope Clinic

*This is a non-profit organization trying to meet the basic needs of individuals to have a healthy life. Most of their clients are uninsured, but treatment plans are open to everyone. Although is not free if insured. They have services related to primary care plans, fertility, and women's health solutions.*

**Address:** 6255 University Ave # 204, Middleton, WI 53562 (Clinic in back of building)



### Contact Information:

- (608) 819-8544
- Website: <http://www.ourladyofhopeclinic.org/>

### Hours of Operation:

Monday	9:00AM-12:30PM	1:00PM-4:30PM
Tuesday	9:00AM-12:30PM	1:00PM-4:30PM
Wednesday	9:00AM-12:30PM	1:00PM-4:30PM
Thursday	9:00AM-12:30PM	1:00PM-4:30PM
Friday	9:00AM-12:30PM	1:00PM-4:30PM

### Important Information:

- No overnight visits.
- May refer you to a hospital.
- To get an appointment you must sign into the clinic in-person and prior to 9 AM. Availability is limited, so you may need to sign in as early as 6:30 AM.
- Patients do not need to be religious.



*Dental Hygiene cleanings for ages 8 and up. They encourage regular visits. General dentistry for extractions and treatment on metal and tooth-colored replacements. They do referrals for oral surgery. They also have limited endodontics which is the treatment of anterior root canals.*

**Address:** 630 East Washington Ave Madison WI



**Contact:**

- (608) 665-2752
- Email: [contact@moresmileswi.org](mailto:contact@moresmileswi.org)
- Website: <https://www.moresmileswi.org/eligibility>

**Hours of Operation:**

Monday	8:00AM-4:00PM
Tuesday	8:00AM-4:00PM
Wednesday	8:00AM-4:00PM
Thursday	8:00AM-4:00PM
Friday	8:00AM-3:00PM

**Registration:** <https://www.moresmileswi.org/registration-forms>

**Important Information:** They only accept Medicaid plans including BadgerCare, and uninsured patients. For uninsured patients, income must be *at or below* 200% of the [Federal Poverty Level](#). For uninsured patients, please refer to their [Fee Scale](#) for price of general services. More Smiles Wisconsin requires all appointments to be scheduled, they do not accept walk-ins. For information about emergency care, please call [608-665-2752](tel:608-665-2752).

**Vivent Health – Madison**

*Vivent is a healthcare company that provides services to HIV positive individuals. They also operate on a sliding scale fee payment plan. Uninsured people may be eligible to receive free treatment as well. They have services in the following area: dental, prep, pharmacy, HIV testing, mental health treatment, substance use treatment, psychotherapy, Hepatitis C testing.*

**Address:** 600 Williamson Street Suite H Madison, WI 53703



**Contact Information:**

- (608) 252-6540
- (800) 486-6276
- Pharmacy Contact: [\(608\) 316-8612](tel:6083168612)

**Hours of Operation:**

Monday	8:30AM-5:00PM
Tuesday	8:30AM-5:00PM
Wednesday	8:30AM-5:00PM
Thursday	8:30AM-5:00PM
Friday	8:30AM-5:00PM

**Registration:** Call the phone number for appointment and fill out this form [https://viventhealth.org/request-an-appointment/request-appointment-form/?location\\_name=Madison](https://viventhealth.org/request-an-appointment/request-appointment-form/?location_name=Madison)

**Important Information:**

- Must be HIV positive to receive service.
- Must call to receive service, there are no drop-in services.

**First Care Clinic**

*The first care clinic is for women who want pregnancy testing, ultrasounds, abortion, or STI testing. They also provide support services for pregnancy education, parenting and post-abortion support.*

**Address:**

- 1350 Mac Arthur Rd, Madison, WI 53714 (Main clinic and shown below)
- 5701 Raymond Rd, Madison, WI 53711 (mobile clinic)
- 2924 Fish Hatchery Rd, Fitchburg, WI 53713 (mobile clinic)
- 1632 W Main St, Sun Prairie, WI 53590 (mobile clinic)



**Contact Information:**

- (608) 259-1605
  - Text or call

<b>Hours of Operation:</b>	<u>Main Clinic</u>	<u>Mobile Clinics</u>
Monday	9:00AM-5:00PM	
Tuesday	9:00AM-5:00PM	10:00AM-4:00PM (Fitchburg/West Madison)
Wednesday	9:00AM-7:00PM	10:00AM-4:00PM (Fitchburg/West Madison)
Thursday	9:00AM-5:00PM	ALTERNATING 10:00AM-4:00PM (Sun Prairie)
Friday	9:00AM-3:00PM	

**Important Information:** Provides free services to anyone!

## **Additional Resources:**

### **Free Clinics website**

*Provides guidance on other free or low-cost clinics in the Dane County area.*

- Website: <https://www.freeclinics.com/det/american-community-medical-centers>

### **Wisconsin Department of Health Services**

*Provides a bunch of health resources. If you go into “healthcare and coverage” you can access resources related to free and low-cost clinics, BadgerCare resources.*

- Website: <https://www.dhs.wisconsin.gov/>

### **Covering WI**

*Covering Wisconsin is a program of the University of Wisconsin-Madison Division of Extension. We help connect Wisconsin residents with health insurance and other programs that support health.*

- Website: <https://coveringwi.org/>

### **National Alliance on Mental Illness: Dane County**

*NAMI Dane County is the founding chapter of the [National Alliance on Mental Illness](#), the nation's largest grassroots mental health organization dedicated to improving the lives of people affected by mental illness.*

- Website: <https://www.namidanecounty.org/>

### **Rogers Behavioral Health**

*Located just a few miles from the Wisconsin state capitol building, Rogers' Madison location supports children, adolescents, and adults with mental health challenges through evidence-based, specialized outpatient care. Through our evidence-based approach, you and your family will learn techniques that are proven to be effective and will help you reclaim your life.*

- Website: <https://rogersbh.org/locations/madison>

### **Tellurian Behavioral Health**

*We firmly believe every person with a behavioral health concern or addiction has the capacity for recovery. Through a tailored combination of psychological and medical care, our certified, compassionate team meets patients where they are in their journey to more positive outcomes.*

- Website: <https://www.tellurian.org/>

## Resources for Substance Use Disorders

---

These resources can help individuals struggling with Substance Use Disorders who are returning to Dane County.

### Behavioral Health and Recovery Clinic

*The Behavioral Health and Recovery Clinic located in Madison, Wis. helps young people and adults who are beginning their recovery. The program focuses on each person's strengths and resiliency and invites family involvement. This is an outpatient service. They offer a comprehensive array of services designed to help you and your family begin the journey of recovery from chemical dependency.*

**Address and Location:** 1102 S. Park St., Madison WI 53715



### Contact Information:

- (608) 282-8270
- Website: <https://www.uwhealth.org/treatments/addiction-services#KVgZbAYgCuq4Yp3WPzqKs>

### Hours of Operation:

Monday	8:00AM-5:00PM
Tuesday	8:00AM-5:00PM
Wednesday	8:00AM-5:00PM
Thursday	8:00AM-5:00PM

## Addictive Disorders Treatment Program (ADTP) by William S. Middleton Memorial Veterans' Hospital and Clinics

*They help Veterans overcome substance use problems from unhealthy alcohol use to life-threatening addiction. They match their services—like counseling, group therapy or medication—to Veterans specific needs.*

**Address and Location:** 2500 Overlook Terrace, Madison WI, 53705



### Contact Information:

- (608) 280-7073
- Website: <https://www.va.gov/madison-health-care/locations/william-s-middleton-memorial-veterans-hospital/#health-care-offered-here>

### Hours of Operation:

Monday	8:00AM-4:30PM
Tuesday	8:00AM-7:30PM
Wednesday	8:00AM-4:30PM
Thursday	8:00AM-7:30PM
Friday	8:00AM-4:30PM

### Important Information:

- Must be a Veteran.
- The Addictive Disorders Treatment Program (ADTP) is a comprehensive, multidisciplinary program of recovery for veterans with substance use disorders and co-occurring mental health disorders. ADTP utilizes evidence-based treatments offered in individual, couples, family & group settings.

### **Alcoholism Day Treatment by Tellurian Behavioral Health**

*The Tellurian Day Treatment Program is for patients that have a supportive living environment but require more intensive treatment than what traditional outpatient treatment programs offer. The program includes, but is not limited to individual and group therapy, cognitive behavioral therapy, dialectical behavioral therapy, stages of change, person-centered and strength-based therapies, mindfulness, and motivational interviewing.*

**Address and Location:** 300 Femrite Dr, Madison, WI 53716



### **Contact Information:**

- (608) 222 – 7311
- Website: <https://www.tellurian.org/treatment/>

### **Hours of Operation:**

Monday	5:00PM-9:00PM
Tuesday	9:00AM-1:00PM
Thursday	5:00PM-9:00PM
Friday	9:00AM-1:00PM

Additional hours outside regular hours of operation available by appointment

### **Important Information:**

- Provides patients with an opportunity to practice recovery skills within the community, utilizing peer and staff support to maintain sobriety.
- Call for cost information and to apply.
- Tellurian’s other services include their Detoxification Center, Residential Treatment, Outpatient Treatment Program, and Crisis Stabilization.



**Alcoholism Counseling and Opioid Addiction Treatment by Connections Counseling**  
*Alcohol or Drug Abuse (AODA) and mental health outpatient program for all ages. Provides individual and group therapy, with an emphasis on peer support and mentoring. Services include intensive outpatient programs for adults and for adolescents.*

**Address and Location:** 5005 University Avenue, Suite 100, Madison, WI 53705



**Contact Information:**

- (608) 233-2100
- Email: [info@connectionsounseling.com](mailto:info@connectionsounseling.com)
- Website: <https://connectionsounseling.com/>

**Hours of Operation:**

Monday	8:00AM-8:00PM
Tuesday	8:00AM-8:00PM
Wednesday	8:00AM-8:00PM
Thursday	8:00AM-8:00PM
Friday	8:00AM-4:00PM

**Important Information:**

- Insurance card or the person responsible for finances.
- Call to schedule a screening call. Consent forms will be sent after screening followed by a match with the primary counselor.
- They also provide teen (ages 13-17) alcoholism counseling.

## **Ujima by Journey Mental Health Center**

*(Pronounced oo-JEE-mah) A culturally-specific outpatient substance abuse treatment program offering both substance abuse and mental health treatment services to African American individuals and families. Ujima prioritizes families who have children ages 18 years and under.*

**Address and Location:** 49 Kessel Court, Madison WI, 53711



### **Contact Information:**

- (608) 280 – 2720
- Website: <https://www.journeymhc.org/services/single-page-services/adult-behavioral-health-services>

### **Hours of Operation:**

Monday	8:00AM-4:00PM
Tuesday	8:00AM-4:00PM
Wednesday	8:00AM-4:00PM
Thursday	8:00AM-4:00PM
Friday	8:00AM-4:00PM

### **Important Information:**

- Cost is a sliding fee scale.
- Call for screening.
- Eligibility requirements: African American families in which an adult family member has a substance abuse problem and is willing to participate in substance abuse treatment.
- Services provided: Individual Mental Health Assessment and Referral, Individual Mental Health, Counseling, Individual Substance Use Assessment and Referral, Individual Substance Use Counseling, Group Counseling, Mental Health and Substance Use Prescriber Services, Peer Support Services

### **Jessie Crawford Recovery Center**

*Jessie Crawford Recovery Center provides specific services for men and women in recovery from the disease of addiction to drugs and/or alcohol. JCRC provides sober housing for single men & women in recovery from substance abuse disorders and/or co-occurring disorders and other life changing issues (i.e. trauma). JCRC also provides family housing for families who may be in need of services.*

**Address and Location:** 1438 N Sherman Ave, Madison, WI 53704



### **Contact Information:**

- 608-241-4285,
- Email: [jcrc.james@yahoo.com](mailto:jcrc.james@yahoo.com)
- Website: <http://ww12.jessiecrawfordrecovery.com/>

### **Hours of Operation:**

Monday	9:00am – 5:00pm
Tuesday	9:00am – 5:00pm
Wednesday	9:00am – 5:00pm
Thursday	9:00am – 5:00pm
Friday	9:00am – 5:00pm

### **Alcoholics Anonymous 24-hour hotline**

*Madison Area Intergroup Central Office's mission is to help A.A. groups within its service area (south central Wisconsin) carry the A.A. message.*

**Address and Location:** 2000 Engel St., Suite 104, Madison WI 53713



### **Contact Information:**

- 24 hr. Hotline: (608) 222-8989
- Website: [info@aamadisonwi.org](mailto:info@aamadisonwi.org)

### **Office Hours of Operation:**

Tuesday	11:00AM-6:00PM
Wednesday	11:00AM-6:00PM
Thursday	11:00AM-6:00PM
Friday	11:00AM-2:00PM
Saturday	11:00AM-2:00PM

### **Important Information:**

The following is a list of some of the services that MAICO provides:

- A 24-hour phone service providing 12-Step referrals and meeting information.
- Conference-approved literature.
- A clearinghouse for information about the A.A. Fellowship.
- Facilitation and support of the service work of local 12-Step committees (e.g., Public Information, Bridging the Gap, Corrections, Treatment).
- A newsletter.
- A directory of area meetings with periodic updates to that directory.
- Other services requested by individual groups within the service area.

**Al-Anon Madison Area**

*Al-Anon is a mutual support program for people whose lives have been affected by someone else's drinking. By sharing common experiences and applying the Al-Anon principles, families and friends of alcoholics can bring positive changes to their individual situations, whether or not the alcoholic admits the existence of a drinking problem or seeks help.*

**Address and Location:**

Al-Anon District 8 Mailbox  
P.O. BOX 14332  
Madison, WI 53708-0332

**Contact Information:**

- Helpline: (608) 258-0314
- Email: [alanonmadisonwi@gmail.com](mailto:alanonmadisonwi@gmail.com)
- Website: <https://sites.google.com/site/alanondistrict8madison/>

**ARC Community Services, Inc.**

*ARC outpatient programs provide women-responsive, family-focused, culturally competent and trauma-informed care to women with substance use and co-occurring disorders in Dane County and surrounding counties. Programming is comprehensive and based on best practices and current research, with a specific focus on pregnant and post-partum women and their children. Each woman creates her own unique treatment plan and determines who will be involved in her care. ARC staff conduct an assessment to assist women in determining the appropriate level of treatment.*

**Address and Location:** 2001 W. Beltline Hwy., #102, Madison, 53713

**Contact Information:**

- (608) 278-2300
- Website: <https://arccommerv.com/womens-center-for-behavioral-health.php>

**Important Information:**

Call (608) 283-6426 to learn more about assessments or to make an appointment.

## 5 Door Recovery

*5 Door Recovery is a residential treatment program for adults living with substance use disorder. Many of their clients also have co-occurring disorders and a history of trauma. Their goal is to help them move into recovery while also addressing their mental health and trauma issues.*

**Address and Location:** 810 W Olin Ave, Madison, WI 53715



### **Contact Information:**

- (608) 827-9170
- Website: <https://catholiccharitiesofmadison.org/5-door-recovery/>

### **Important Information:**

They use a holistic approach, rooted in Substance Abuse and Mental Health Services Administration (SAMHSA)-approved, evidence-based practices to help our clients regain their physical, mental and spiritual health.

- Door 1 – Change
- Door 2 – Compassion
- Door 3 – Courage
- Door 4 – Health
- Door 5 – Hope

## Social Support Resources

---

Social support is a very important part of re-entry, and these Dane County resources can be utilized in order to give individuals a sense of support and belonging.

### JustDane

*JustDane's many programs inspire hope for individuals returning to the Dane County community after incarceration by breaking down the barriers that can prevent them from fully participating in our community and the lives of their families. Just Dane also supports the families of those incarcerated through reading programs, family visit programs and mentoring programs. grams. This helps bring wholeness and healing to individuals and their families.*

**Address and Location:** 128 E Olin Ave Suite 202, Madison, WI 53713



### Contact Information

- [\(608\) 256-0906](tel:6082560906)
- Email: [info@justdane.org](mailto:info@justdane.org)
- Website: <https://justdane.org/>

### Hours of Operation:

Monday	9:00AM-5:00PM
Tuesday	9:00AM-5:00PM
Wednesday	9:00AM-5:00PM
Thursday	9:00AM-5:00PM
Friday	9:00AM-5:00PM



**Important Information:**

Just Bakery utilizes the National Restaurant Association's "ManageFirst" curriculum, teaching hospitality and restaurant management, supervision, cost control, nutrition, and ServSafe to our students, as well as intro to baking hands-on in our commercial kitchen. This curriculum allows students to earn up to 12 college credits and gain automatic acceptance into the Madison College Culinary Program. Students also receive sales and marketing experience by working side by side with program staff in a variety of sales venues, learning customer service skills and front of the house skills.

- *Just Bakery is currently in person- if you are interested in attending, email [jaclyn@justdane.org](mailto:jaclyn@justdane.org) (or call/text 608-220-1690) and she will connect you with the information!*

Peer Support Specialists are available as a resource of support, allowing peers to direct their own reentry process from a strength-based platform, giving the peer a sense of autonomy and pride over their own reentry journey.

- Therapy sessions
- An Urban Agricultural paid training program
- Housing placement and rent assistance
- Employment and peer support services
- Additional training and education
- Advocacy for justice involved individuals facing the challenges of reentry

The process of placing a Core Team Member in a support circle begins before they are released from prison. In-reach volunteers meet with a prospective Core Team Member to help determine what they need and work with them to create a reentry plan. Once released, the Core Team meets with their Circle Members weekly to create and work toward small, achievable goals.

- <https://justdane.org/contact-us/>

**Comprehensive Community Services (CCS) - Dane County Department Of Human Services**  
*In Dane County, Comprehensive Community Services (CCS) is a voluntary, community-based program funded by the State of Wisconsin and operated by the Dane County Department of Human Services. The CCS program offers a wide array of psychosocial rehabilitation services. These are services and support activities that assist CCS clients with mental health and/or substance use conditions to achieve their highest possible level of independent functioning, stability, and independence, and to facilitate recovery*

**Address and Location:**

1202 Northport Drive, 3rd floor, Madison, WI 53704



**Contact Information**

- (608) 242-6415
- Email: [CCSPProviderNetwork@countyofdane.com](mailto:CCSPProviderNetwork@countyofdane.com)
- Website: <https://danecountyhumanservices.org/Behavioral-Health/Comprehensive-Community-Services>

**Important Information:**

- Contact List
  - <https://providers.dcdhs.com/documents/pdf/ccs/Overview-of-Point-Person-Contacts-at-Dane-County-CCS.pdf>
- The CCS Service Array includes the following areas:
  - Screening and Assessment
  - Service Planning
  - Service Facilitation
  - Diagnostic Evaluations
  - Medication Monitoring
  - Physical Health Monitoring
  - Peer Support
- Must be:

- Dane County resident
- Eligible for Medical Assistance
- Have mental health or substance use diagnosis
- Functional limitation in one or more major life activities caused by mental health or substance use issues as measured by the state screen
- Need for psychosocial rehabilitation services
- Must have a current physician prescription for services
  - **<https://danecountyhumanservices.org/documents/pdf/CCS/physician-prescription.pdf>**

## Urban League of Greater Madison - Expungement Clinics

**Address and Location:** 2222 S Park St STE 200, Madison, WI 53713



### Contact Information:

- (608) 729-1200
- Website: <https://ulgm.org/expungement/>

### Hours of Operation:

Monday	9:00AM-5:00PM
Tuesday	9:00AM-5:00PM
Wednesday	9:00AM-5:00PM
Thursday	9:00AM-5:00PM
Friday	9:00AM-5:00PM

### Important Information:

- Our FREE expungement clinics are a partnership between the Urban League of Greater Madison, Legal Action of Wisconsin, Foley & Lardner, and the Wisconsin Association of African American Lawyers. Attendees will receive:
  - FREE criminal record reviews with an attorney.
  - Advice regarding your eligibility for arrest removal and correction; expungement; and pardon.
  - Assistance with paperwork and filing court documents IF eligible.
  - Information about your rights related to employment and criminal records.
  - Advice for answering job application and job interview questions about your background.
  - Job leads & information about FREE career training opportunities.
- Clinics are held approximately once each month.

## **Joining Forces for Families - Dane County Department of Human Services**

At the heart of this initiative, fifteen community social workers are situated in neighborhoods throughout Dane County. Each social worker manages at least one JFF office that is uniquely responsive to its neighborhood context, allowing direct access to services in the community.

### **Contact Information**

- (608) 335-7817
- Email: [bruce@countyofdane.com](mailto:bruce@countyofdane.com)
- Website: <https://danecountyhumanservices.org/Children-Youth-and-Family/Community-Programs/Joining-Forces-for-Families>