

# OUTAGAMIE COUNTY

## REENTRY RESOURCES

---

January 2024	<b>Welcome home!</b> This guide provides resources throughout Outagamie County that may be helpful for those re-entering into the community. All information gathered in this guide was found via online searches or contacts who are connected to the resources.
--------------	---

### TABLE OF CONTENTS

- Food Resources.....2
- Housing Resources.....12
- Education Resources.....18
- Employment Resources.....23
- Healthcare Resources.....28
- Resources for Substance Use Disorders.....34
- Social Support Resources.....38
- Other.....41

## **Food Resources**

A list of food assistance contacts that can aid you throughout Outagamie County.

### **Salvation Army - Fox Cities:**

*At the Salvation Army - Fox Cities, we know that feeding the person is the first step before you can feed the soul. Our goal is to positively impact the hungry and those in need in our community by offering a free lunch meal and having a food pantry to distribute canned goods and fresh produce*

### **Address and Location**

130 E North St. Appleton, WI 54911.



### **Contact Information**

- (920)-734-3324
- Website: <https://centralusa.salvationarmy.org/foxcities/>

### **Hours of Operation**

Monday	8:00AM - 11:30AM
Tuesday	8:00AM - 11:30AM
Wednesday	8:00AM - 11:30AM
Thursday	8:00AM - 11:30AM
Friday	8:00AM - 11:30AM

### **Important information**

- Monthly food staples including meat, milk, and fresh produce are provided to clients in need.
- The pantry is open to residents who live in the Fox Cities area.
- Qualifications for the food pantry are based on your family size and income.
- Our Noon Meal Program serves meals seven days a week thanks to generous donors and the many volunteers who serve a meal to those in need every day. These meals

are free to anyone. We serve meals at our Social Service Center, located at 130 E North St. Appleton, WI.

### **Freedom Center Food Pantry:**

*With the help of a few churches working together, the pantry opened in the early part of 2010 upon completion of updates to the building provide.*

### **Address and Location**

1110 S Oneida St, Appleton, WI 54914.



### **Contact Information**

- (920)-412-7582
- Website: <https://www.freedom-from-hunger.org/>

### **Hours of Operation**

Wednesday 3:45PM-5:45PM

### **Important information**

- Only open on Wednesday from 3:45 to 5:45. Please do not arrive before 3:45
- When doors open you will be given a #, shopping begins with a random # every week.  
No first come first served
- When doors open we will have a short Bible devotional and prayer before shopping
- Bring I.D.

**St. Joseph Food Program:**

*St. Joseph Food Program distributes fresh, healthy food and non-perishable items to help meet the nutritional needs of the community.*

**Address and Location**

1465A Opportunity Way Menasha, WI 54952.

**Contact Information**

- (920)-734-9461
- Website: <https://www.stjoesfoodprogram.org/>

**Hours of Operation**

Monday	9:00AM-12:00PM, 4:30PM- 6:30PM
Tuesday	11:00AM-1:00PM
Wednesday	9:00AM-12:00PM
Thursday	11:00AM-1:00PM

**Important information**

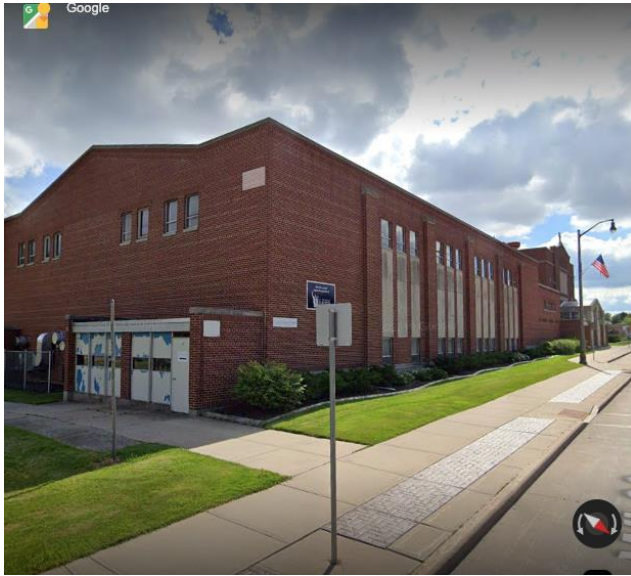
- To ensure same day service, it is helpful if participants arrive 30 minutes before the deadline. Please call during contact hours to register.
- This program covers residents of the following counties: Calumet County, WI, Outagamie County, WI and Winnebago County, WI.
- Proof of Income: Required
- Proof of Residency: Required

### **Loaves & Fishes of the Fox Valley:**

*Loaves & Fishes of the Fox Valley has spent the last sixteen years providing free evening meals to the hungry at Trinity Lutheran Church in Appleton. Last year alone we served over 22,000 meals to people in need. They recently moved into the St. Therese parish activity center and aim to serve children and adults in need.*

### **Address and Location**

213 E. Wisconsin Ave., Appleton, WI 54911.



### **Contact Information**

- (920) 205-6900
- Website: <https://www.loavesandfishesfv.org/>

### **Hours of Operation**

Monday	5:00PM-6:00PM
Wednesday	5:00PM-6:00PM
Friday	5:00PM-6:00PM

### **Important information**

- Due to space and time constraints they cannot operate at full capacity, but as of Septemeber 2023 are resuming meal service M, W, F going forward
- Park in the lot off Summer Street and go tot he double glass doors on the side of the building on the far east end across from the garden
- For new guests. The first visit all household member smust be presetn and register for a household meal card. No documentation required. This card can be used at future visits to pick up all meals for your household without all members being present
- Takeout or Dine-In.

### **Salvation Army Bread of Life Center in Outagamie County:**

*The Salvation Army Food Pantry provides a two to three day supply of emergency food to neighborhood individuals and families who are hungry. The food is given on the day it is requested and represents breakfast, lunch and dinner for all members of the household.*

### **Address and Location**

227 E State St, Black Creek, WI 54106.



### **Contact Information**

- (920) 984-9305
- Website: <https://centralusa.salvationarmy.org/outagamie/>

### **Hours of Operation**

Monday 9:00AM- 11:15AM, & 3:30PM-5:15PM  
Tuesday 9:00AM-11:15AM

### **Important information**

- Individuals or families meet with a staff person in a quiet, confidential setting and determine what type and how much assistance can be provided. During client meetings, we discuss everyday needs.
- Can provide: Food through our Food Pantry, gently used clothing, coats, household items, gently used furniture and appliances.
- Questions may be directed to either the number provided, or email [cindy.muelemans@usc.salvationarmy.org](mailto:cindy.muelemans@usc.salvationarmy.org)



**Ruby's Pantry:**

*Ruby's Pantry has been serving rural communities in Minnesota and Wisconsin for 20 years with donated overstocked food. It is a faith based non-profit organization that has become a household name for many allowing families to stretch their grocery dollar. Ruby's Pantry has grown to over 11,000 volunteers that serve over 150,000 families and distribute 1.2 million pounds of food to Pop-Up Pantry locations each month.*

**Address and Location**

326 East North Street, Appleton, Wisconsin 54911.

**Contact Information**

- (920) 733-2303
- Website: <https://www.rubyspantry.org/location/149>
- Search for other Ruby Pantry's: <https://www.rubyspantry.org/find-location>

**Hours of Operation**

First Tuesday of Every Month      4:30PM-6:00PM

**Important information**

- Ruby's Pop-Up Pantries hosted at First English will take place the first Tuesday of every month. On those days, the parking lot will open at 3:30 p.m. for cars to begin lining up. Please enter the Downtown Site parking lot via the E. North Street entrance. Volunteers will direct traffic. Pre-registration is not available at this time and shares will be distributed on a first come, first served basis. As stated above, each share is \$25, cash only at this time.
- For \$25\* dollars, customers receive a "share" - an abundance of groceries valued at well over \$200.
- Registration begins 4:30PM and food bundles available 4:30PM-6:00PM



- There are no income or resident limits/requirements, and you can attend a Pop-Up Pantry at any city/state location. IF YOU EAT – YOU QUALIFY!

### **Ruby's Pantry/Shepherd of the Hills:**

*Ruby's Pantry has been serving rural communities in Minnesota and Wisconsin for 20 years with donated overstocked food. It is a faith based non-profit organization that has become a household name for many allowing families to stretch their grocery dollar. Ruby's Pantry has grown to over 11,000 volunteers that serve over 150,000 families and distribute 1.2 million pounds of food to Pop-Up Pantry locations each month.*

### **Address and Location**

N1615 Meadowview Drive, Greenville, WI 54942.



### **Contact Information**

- (920) 540-0386 or (920)422-0534
- Website: <https://rubyspantry.org/location/76>

### **Hours of Operation**

First Saturday of every month:

Registration is 7:30-10 am and food distribution is 8:00AM-10:00AM

### **Important information**

- Food pop-up and distribution is the first Saturday of each month.
- \$25 suggested donation fee but can be potentially waived. Abundance of grocery items provided.
- We recommend you bring two boxes or totes for your bundle to be loaded into at the Pop-Up Pantry. In advance, please go to RubysPantry.org to create an account. Express Track reservations are recommended to ensure your bundle is reserved for you. Registration is simple and requires no documentation. You can still attend the Pop-Up Pantry and sign in when you arrive (until bundles run out).
- Volunteers will guide you through each step of your visit with us.

## **Holy Spirit Parish**

*Community meal two Sundays per month at 4:30pm at Holy Spirit gym in Kimberly September through May. No meals in June, one meal in July and August. DATES VARY ACCORDING TO PACKER SCHEDULE. Call the parish or visit [www.holyspirit-parish.org](http://www.holyspirit-parish.org) for specific dates and location.*

## **Address and Location**

W27796 County Rd KK, Appleton, WI, 54915



## **Contact Information**

- (920)-788-7640
- Website: <https://www.holyspirit-parish.org/sunday-suppers>
- Email: [robertsp@holyspirit-parish.org](mailto:robertsp@holyspirit-parish.org)

## **Hours of Operation**

Sunday 4:30PM

## **Important information**

- Cost: None
- Anyone in Outagamie or Calumet County eligible.
- Call for details for required documentation.

## Housing Resources

---

A list of housing-related assistance contacts that can help you find a place to stay in Outagamie County.

### Pillars

*From homelessness to coming home, Pillars provides shelter, support, and solutions to address the housing needs in our community.*

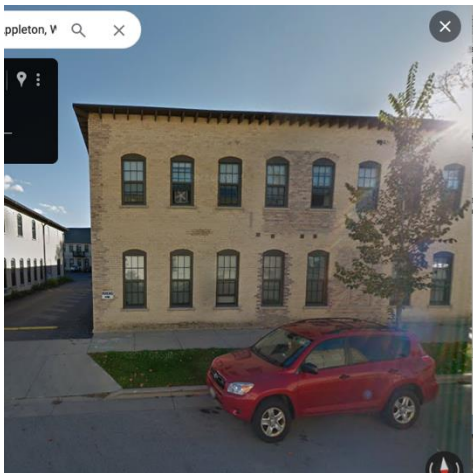
### Address and Location

Main Office (Pictured): 605 E. Hancock St. Appleton, WI, 54911 S.

Adult shelter: 1928 W. College Ave, Appleton, WI, 54914

Resource Center: 129 S. Mason St., Appleton, WI, 54914

Adult & Family Shelter: 400 N. Division St, Appleton, WI, 54911



### Contact Information

- 920-734-9192 Ext. 200
- Website: <https://pillarsinc.org/about-us/locations/>

### Hours of Operation

Monday	8:00AM-4:00PM
Tuesday	8:00AM-4:00PM
Wednesday	8:00AM-4:00PM
Thursday	8:00AM-4:00PM
Friday	8:00AM-12:00PM

### Important information

- Please call the number listed above should you need emergency housing.
- The resource center is a safe, welcoming environment during the day, providing housing-related services to adults experiencing homelessness.

- Pillars provides over 150 safe, affordable homes and rental units in the Fox Valley Area.

## **COT's Inc Mens Program**

*COTS, Inc, is a transitional shelter helping individuals experiencing homelessness in the Fox Valley, Wisconsin. Our goal is to end homelessness by helping individuals to transition to self-sufficiency and independent living.*

### **Address and Location**

819 S. West Avenue, Appleton, WI, 54915



### **Contact Information**

- (920) 515-2808,
- Website: <https://appletoncots.org/>

### **Hours of Operation**

Monday	8:00AM-5:00PM
Tuesday	8:00AM-5:00PM
Wednesday	8:00AM-5:00PM
Thursday	8:00AM-5:00PM
Friday	8:00AM-5:00PM

### **Important information**

- Each resident of COTS participates in our Living Skills Program which includes instruction on basic living skills including personal care, AODA recovery and relapse prevention, money management, obtaining/maintaining employment, personal responsibility, and decision making. Residents set individualized goals and progress is reviewed monthly with staff for the duration of residency. After residents move into independent housing, they have the option of participating in our Aftercare Program and receiving support for an additional two years.
- Men's Program: \$285.00 per month, \$100 security deposit
  - <https://appletoncots.org/programs/how-to-apply/>
- They will conduct reference and criminal background checks.

## **COTs Inc Womens Program:**

*COTS is a non-profit 501(c)(3) organization which fulfills a need within the Continuum of Care of the Fox Cities by providing temporary transitional shelter for the homeless men and women in Outagamie, Winnebago and Calumet counties. Their goal is to respectfully provide homeless individuals a safe and affordable place to live, food, household needs and training on basic living skills enabling them to transition to self-sufficiency and independent living.*

## **Address and Location**

1003 West College Ave, Appleton, WI 54914.



## **Contact Information**

- (920) 843-7269
- Useful email: [jianness@appletoncots.org](mailto:jianness@appletoncots.org)
- Website: <https://appletoncots.org/>

## **Hours of Operation**

Monday	8:00AM-5:00PM
Tuesday	8:00AM-5:00PM
Wednesday	8:00AM-5:00PM
Thursday	8:00AM-5:00PM
Friday	8:00AM-5:00PM

## **Important information**

- Each resident of COTS participates in our Living Skills Program which includes instruction on basic living skills including personal care, AODA recovery and relapse prevention, money management, obtaining/maintaining employment, personal responsibility, and decision making. Residents set individualized goals and progress is reviewed monthly with staff for the duration of residency. After residents move into independent housing, they have the option of participating in our Aftercare Program and receiving support for an additional two years.
- They will conduct reference and criminal background checks.



- Women's Program: \$285.00 per month, \$100 security deposit
  - <https://appletoncots.org/programs/how-to-apply/>

## Salvation Army - Fox Cities:

*Onsite Transitional Housing: eleven fully furnished efficiency units for homeless men and women. Scattered Site Transitional Housing: 15 units located within the Fox Cities for homeless families and individuals. Rapid Re-Housing: Scattered Site subsidized housing for 16 families and individuals.*

## Address and Location

130 E North St. Appleton, WI 54911.



## Contact Information

- (920)-734-3324
- Email: [support@safoxcities.org](mailto:support@safoxcities.org)
- Website: <https://centralusa.salvationarmy.org/foxcities/>

## Hours of Operation

Monday	8:00AM-4:30PM
Tuesday	8:00AM-4:30PM
Wednesday	8:00AM-4:30PM
Thursday	8:00AM-4:30PM
Friday	8:00AM-4:30PM

## Important information

- Eligibility: Homeless single adults and families.
- Please call ahead of your visit, if possible, to confirm space.
- Intake procedure: Referral from other agency or call main number.

## Education Resources

---

This section provides resources for those residing in Outagamie County who wish to further their education after incarceration.

### **Fox Valley Technical College:**

*At Fox Valley Technical College, we're here to support and guide you in achieving your goal of earning a high school credential of either a GED® credential or HSED. With our Adult Education (AE) program, you'll get the help you need to build your reading, writing, math, science, social science and study skills.*

### **Address and Location**

1825 N Bluemound Dr, Appleton, WI 54914.



### **Contact Information**

- (920) 993-5139
- Website: <https://www.fvtc.edu/academics/adult-education/ged-hsed>

### **Hours of Operation**

Monday	8:00AM-4:30PM
Tuesday	8:00AM-4:30PM
Wednesday	8:00AM-4:30PM
Thursday	8:00AM-4:30PM
Friday	8:00AM-4:30PM

### **Important information**

- Fox Valley Technical College (FVTC): FVTC offers a variety of GED and education programs, including:
  - GED preparation classes
  - HiSET preparation classes

- Adult basic education (ABE) classes
- English language learner (ELL) classes
- High school equivalency diploma (HSED) programs
- College courses
- Computer literacy classes
- Job skills classes
- Refer to website link for other GED locations associated with FVTC.
- To learn more about Fox Valley Literacy's GED and education programs, visit their website or call them at (920) 991-9840.
- Adult Education (AE) is personal and flexible, with a variety of convenient class options. Choose from lab, online and traditional classroom settings with day and evening hours.
  - <https://www.fvtc.edu/academics/adult-education>

**Fox Valley Literacy:**

*Fox Valley Literacy provides free tutoring for adult learners in Outagamie, Waupaca, northern Calumet, and northern Winnebago counties. You will meet one-on-one with a trained volunteer tutor to learn what you want to learn at your own pace. Fox Valley Literacy programs are completely free for all learners. Students and tutors usually meet once a week for one hour. We will work with you to fit your schedule.*

**Address and Location**

130 E Franklin St, Appleton, WI 54911.

**Contact Information**

- [\(920\) 991-9840](tel:9209919840)
- Text or Call: (920)-234-8041
- Website: <https://foxvalleylit.org/become-a-student/>

**Hours of Operation**

Monday	9:00AM-7:00PM
Tuesday	9:00AM-7:00PM
Wednesday	9:00AM-7:00PM
Thursday	9:00AM-7:00PM

**Important information**

- Improve your reading, writing, math and computer skills, or get your GED or HSED.
- Come to a conversation circle or meet one-on-one with a tutor to learn or improve your English.
- Tutors can help with the written driver's test, entrance exams, computer skills, and more!
- You must be 18 years or older to become a student.

### **Appleton Public Library:**

*As a staff, Appleton Public Library honors and celebrates the diversity of our vibrant community. They strive to provide inclusive services and programs that reflect our community's needs. They respect, value and support you through their commitment to connect you with the information and resources to accomplish your goals. This can range from educational to employment.*

### **Address and Location**

3000 E. College Avenue, Appleton, WI, 54915

- Starting January 8<sup>th</sup> 2024. Please call to confirm this becomes a permanent location.



### **Contact Information**

- 920-832-6173
- 920-832-6177: Information Desk
- Website: <https://apl.org/about/>

### **Hours of Operation**

Monday	9:00AM-9:00PM
Tuesday	9:00AM- 9:00PM
Wednesday	9:00AM-9:00PM
Thursday	9:00AM-9:00PM
Friday	9:00AM-6:00PM
Saturday	9:00AM-5:00PM
Sunday	12:00PM-5:00PM

### **Important information**

- Entrepreneurship and online business resources to develop business and marketing plans on their website.
- Access to books, magazines, newspapers, and articles through their collection.

- Business events held to learn from aspects of running a business.
- Can request a 1:1 appointment for small business help. Link provided below.
  - <https://apl.org/service/small-business-help/>
- 3 hours per day use of computers with the “InfoSoup” library card. Can access GED preparation programs here with staff assistance. If you cannot obtain a library card through the website, present staff with an ID to obtain a guest pass.
- They offer a variety of programs that can be tailored to suit your event. “Bring the library to you” can include a visit focus either in person or virtual where you can discuss job resources, curriculum topics, small business creation, genealogy, etc.
  - <https://apl.org/service/bring-the-library-to-you/>



## Employment Resources

This section can aid individuals returning to Outagamie County in finding employment opportunities upon re-entry to their community.

### Appleton Public Library:

*As a staff, Appleton Public Library honors and celebrates the diversity of our vibrant community. They strive to provide inclusive services and programs that reflect our community's needs. They respect, value and support you through their commitment to connect you with the information and resources to accomplish your goals. This can range from educational to employment.*

### Address and Location

3000 E. College Avenue, Appleton, WI, 54915

- Starting January 8<sup>th</sup> 2024. Please call to confirm this becomes a permanent location.



### Contact Information

- 920-832-6173
- 920-832-6177: Information Desk
- Website: <https://apl.org/about/>

### Hours of Operation

Monday	9:00AM-9:00PM
Tuesday	9:00AM- 9:00PM
Wednesday	9:00AM-9:00PM
Thursday	9:00AM-9:00PM
Friday	9:00AM-6:00PM
Saturday	9:00AM-5:00PM
Sunday	12:00PM-5:00PM

### Important information

- Request a free virtual or in person session with a library staff member or volunteer for up to 2 hours to help with the following.
  - Job searches

- Online applications
- Writing cover letters
- Writing resumes
- Learning new skills using our free online resources
- Exploring career changes, including jobs that allow you to work from home
- <https://apl.org/service/job-connection-help/>

### **Fox Cities Job Center:**

*The Fox Valley Workforce Development Area is served by a number of different organizations and agencies focused on workforce needs in Calumet, Fond du Lac, Green Lake, Waupaca, Waushara and Winnebago Counties.*

### **Address and Location**

1802 Appleton Rd, Menasha, WI 54952



### **Contact Information**

- (920) 997-3272
- Website: <https://www.foxvalleyjobcenters.com/locations/menasha/>

### **Hours of Operation**

Monday	9:00AM– 4:00PM
Tuesday	9:00AM– 4:00PM
Wednesday	9:00AM– 4:00PM
Thursday	9:00AM– 4:00PM
Friday	9:00AM– 4:00PM

### **Important information**

- Resource Room, where computer access & job searching assistance is available, is open for walk-in visitors from 9 am – 4 pm, Monday–Friday and scheduled virtual OR phone appointments if desired.

## **Brown County Job Center:**

*Serving the communities of Allouez, Ashwaubenon, Baileys Harbor, Bonduel, Bowler, Brussels, Caroline, Cecil, Clintonville, Denmark, De Pere, Egg Harbor, Ellison Bay, Embarrass, Ephriam, Fish Creek, Forestville, Green Bay, Greenleaf, Gresham, Howard, Keshena, Krakow, Leopolis, Maplewood, Marion, Neopit, New Franken, Oneida, Pulaski, Shawano, Sister Bay, Sturgeon Bay, Suamico, Tigerton, Tilleda, Washington Island, Wittenberg, Wrightstown and Zacho.*

## **Address and Location**

301 N. Adams St., Green Bay, WI 54301



## **Contact Information**

- (920) 930-6570
- Website: <https://jobcenterofwisconsin.com/>
- [bayareajobcenters@dwd.wisconsin.gov](mailto:bayareajobcenters@dwd.wisconsin.gov)

## **Hours of Operation**

Monday	8:00AM-4:30PM
Tuesday	8:00AM-4:30PM
Wednesday	8:00AM-4:30PM
Thursday	8:00AM-4:30PM
Friday	8:00AM-4:30PM

## **Important information**

- Job service information and desk.
- Vocational rehabilitation.
- Veteran employment services.
- Please call the office or email prior to visitation.

## Other potential sites to choose from:

### Job Center of Wisconsin

*This website is a comprehensive resource that includes job listings, skill exploration, resume creation, and workforce events.*

#### Address and Location

- No physical location

#### Contact Information

- 888-258-9966
- Website: <https://apl.org/about/>

#### Hours of Operation

Monday	8:00AM-4:30PM
Tuesday	8:00AM-4:30PM
Wednesday	8:00AM-4:30PM
Thursday	8:00AM-4:30PM
Friday	8:00AM-4:30PM

#### Important information

- Look at sample resumes.
- Create and edit your own resume.
- Perform job searches.
- Look for workforce events.
- Education and training resources.
- Veteran-specific resources
  - <https://dwd.wisconsin.gov/veterans/>
- Disability-specific resources
  - <https://dwd.wisconsin.gov/dvr/>

### 211 Wisconsin

*This is a website that you can use to look for any basic-need resource, whether it be employment search focused or not. Simply type “employment” or “job center” in the “I’m Looking For” search bar and enter the appropriate zip code closest to you.*

## Healthcare Resources

This section provides resources for both physical and mental healthcare in Outagamie County.

### **NAMI Fox Valley:**

*NAMI Fox Valley works to support and empower everyone touched by mental illness. We commit to eliminate stigma and nurture recovery through education, support, outreach, and advocacy.*

### **Address and Location**

211 E. Franklin St., Appleton, WI, 54911



### **Contact Information**

- 920-954-1550
- Website: <https://www.namifoxvalley.org/>

### **Hours of Operation**

Monday	9:00AM-4:00PM
Tuesday	9:00AM-4:00PM
Wednesday	9:00AM-4:00PM
Thursday	9:00AM-4:00PM

### **Important information**

- They provide on their website a resource guide for families and individuals living with mental illness.
- The following **peer groups** meet at **NAMI Fox Valley's office** at 211 E. Franklin St., Appleton, WI 54911:
  - **Adult Peer Support Group** (for any adult experiencing mental health challenges): Meets every 1st and 3rd Monday from 6:00-7:30 PM.

- **Young Adult Peer Support Group** (for adults ages 18-26 experiencing mental health challenges): Meets on the 1st & 3rd Wednesdays of each month from 6:00-8:00 PM
- **Adult Women's Spanish-Language Group** (for Spanish-speaking adult women experiencing mental health challenges): Meets on the 2nd Monday of each month from 6:00-7:30 PM
- **Adult Women's Support Group** (for adult women experiencing mental health challenges): Meets on the 2nd Wednesday of each month from 6:00-7:30 PM
- **Adult Men's Support Group** (for adult men experiencing mental health challenges): Meets on the 4th Monday of each month from 6:00-7:30 PM
- The following **family group** meets at **First Congregational United Church of Christ**, located at 724 E. South River St., Appleton, WI 54915:
  - **Faith-Based Family Support Group** (for any adult family member or loved one of individuals living with mental health challenges): Meets on the 3rd Thursday of each month from 6:30-8:00 PM.



## **Ascension Nurse Direct by Ascension Northeast Wisconsin St. Elizabeth Hospital:**

*Ascension NE Wisconsin - St. Elizabeth Campus in Appleton, Wisconsin delivers specialty and 24/7 emergency care. And, we have a level III trauma center. We provide advanced surgical care for serious and life-threatening injuries and illnesses. Our care teams listen to understand your health needs and deliver care that's right for you. Ascension St. Elizabeth is a destination for specialty care - including heart and vascular health, cancer care, radiology, breast health, and behavioral health . Our OB-GYN maternity care teams at our Birthing Center deliver a personalized birthing experience and advanced neonatal care for sick babies. We offer a wide range of minimally invasive procedures using robotic-assisted technology, imaging and lab tests, a dedicated inpatient rehabilitation center, all on one campus.*

### **Address and Location**

1506 S Oneida St, Appleton, WI 54915



### **Contact Information**

- 800-362-9900
- Website: <https://healthcare.ascension.org/locations/wisconsin/wiapa/appleton-ascension-ne-wisconsin-st-elizabeth-campus>

### **Hours of Operation**

24 hours/day, 7 days/week

### **Important information**

- They provide the following services.
  - Mental Health.
  - Pediatrics.
  - Deliver personalized care.
- Ascension has a commitment to and respect for each person's dignity with a special concern for those who struggle with barriers to access healthcare services.
  - You can apply for financial assistance through the attached website or call for more details.

## **ThedaCare Appleton Medical Care Center**

*ThedaCare Appleton Medical Center is a full-service hospital that offers a wide range of medical and surgical services, including: primary care, urgent care, emergency care, Inpatient and outpatient surgery and specialty care.*

### **Address and Location**

- Hospital: 818 N Meade St, Appleton, WI 54911
- Urgent Care: 3925 N Gateway Dr, Appleton, WI 54913



### **Contact Information**

- [\(920\) 731-4101](tel:9207314101)
- Website: <https://directory.thedacare.org/location/thedacare-regional-medical-center-appleton>
- Website (Urgent Care): [https://directory.thedacare.org/location/thedacare-urgent-care-appleton?\\_gl=1\\*\\_m7roq0\\*\\_ga\\*MzI4MTI1MTYuMTcwMTE5ODcyOQ..\\*\\_ga\\_XHB87ZS7KM\\*MTcwMTE5ODc4Mi4xLjEuMTcwMTE5OTE3OC4yLjAuMA..](https://directory.thedacare.org/location/thedacare-urgent-care-appleton?_gl=1*_m7roq0*_ga*MzI4MTI1MTYuMTcwMTE5ODcyOQ..*_ga_XHB87ZS7KM*MTcwMTE5ODc4Mi4xLjEuMTcwMTE5OTE3OC4yLjAuMA..)

### **Hours of Operation**

Hospital	24 hours/7 Days a week
Urgent Care	Hours Below
Monday	7:00AM-7:00PM
Tuesday	7:00AM-7:00PM
Wednesday	7:00AM-7:00PM
Thursday	7:00AM-7:00PM
Friday	7:00AM-7:00PM
Saturday	8:00AM-5:00PM
Sunday	8:00AM-5:00PM

### **Important information**

- They offer video visit and walk in urgent care.
- You can schedule physical appointments with them.
- Please call to confirm insurance requirements as it is subject to change.

## Hope Clinic & Care Center

*Offers FREE general physical exams, primary care, medication assistance, laboratory services and consultations for anyone below 300% of the federal poverty level.*

### Address and Location

1814 Appleton Road, Menasha WI, 54952



### Contact Information

- 920-931-1150
- Website: <https://hopeclinic.care/>

### Hours of Operation

Monday	9:00AM-5:00PM
Tuesday	9:00AM-5:00PM
Wednesday	9:00AM-5:00PM
Thursday	9:00AM-5:00PM

### Important information

- Eligibility requirements
  - Household income at or below 300% of the Federal Poverty Guideline
- At your first visit please bring proof of income documentation such as
  - Recent tax return or W-2
  - Two months check stubs.
  - Unemployment check stubs
  - Social security income statement
- You can request an appointment online and check eligibility on their website.

## **St Francis Community Free Walk-In Clinic**

*We offer general medical care and some specialized medicine for the uninsured and underinsured. Our medical staff includes medical doctors, psychiatrists, nurses, nurse practitioners and various specialists. Our medical staff and receptionists are all volunteers. Our clinic operates entirely by private donations and individuals giving of their time. We do not have a dentist/dental service at this time.*

### **Address and Location**

1000 N. Koeller St, Oshkosh, WI, 54902



### **Contact Information**

- 920-230-2273
- Website: <https://fathercarrs.org/free-clinic/>

### **Hours of Operation**

Monday	5:00PM-7:00PM
Tuesday	1:00PM-4:00PM
Wednesday	1:00PM-4:00PM
Thursday	5:00PM-7:00PM
Friday	8:30AM- 11:00AM
Saturday	4 <sup>th</sup> Saturday each month, 9:00AM-11:00AM

### **Important information**

- Psychiatry: Call for an appointment Friday 8:30am-11:00am, 1<sup>st</sup> and 3<sup>rd</sup> Tuesday of each month – open at 5:30 PM
- First come, first serve at designated hours. Call for information on documents required.
- Serves: Uninsured and underinsured individuals who live in Winnebago, Fond du Lac, Calumet, Green Lake, Outagamie, and Waushara counties.

## Resources for Substance Use Disorders

These resources can help individuals struggling with Substance Use Disorders who are returning to Outagamie County.

### Mental Health and Substance Abuse Services:

*The Division of Mental Health and Substance Use Treatment is to provide services to individuals and their families who are affected by mental illness and/or alcohol and other drug abuse, which meets their needs and assists them in living independently in the community in the least restrictive setting.*

### Address and Location

320 S Walnut St, Appleton, WI 54911



### Contact Information

- Crisis Intervention: 920-832-4646
- General: 920-832-5270
- Website: <https://www.outagamie.org/government/f-through-m/health-human-services/mental-health>

### Hours of Operation

Monday	8:00AM– 4:30PM
Tuesday	8:00AM– 4:30PM
Wednesday	8:00AM– 4:30PM
Thursday	8:00AM– 4:30PM
Friday	8:00AM– 4:30PM

### Important information

- Various helplines listed on the website for immediate emergencies.
- Services
  - Mental Health Walk-In Clinic
  - Comprehensive Community Services (CCS)
  - Community Support Program (CSP)

- Coordinated Services Team (CST)
- Psychiatric Services

### **Options Treatment Programs:**

*Provides one to one substance abuse counseling for individuals and families, intervention/education treatment. Offers drug and alcohol assessments, urinalysis drug screens, adult and adolescent intensive outpatient treatment and aftercare treatment.*

### **Address and Location**

1000 N Lynndale Dr Ste C, Appleton, WI, 54914



### **Contact Information**

- 920-735-9010
- Website: <https://optionstx.com/>

### **Hours of Operation**

Monday	8:00AM-5:00PM
Tuesday	8:00AM-5:00PM
Wednesday	8:00AM-5:00PM
Thursday	8:00AM-5:00PM
Friday	8:00AM-3:00PM

### **Important information**

- There will be a counseling process. They are there to welcome your courageousness and to provide you with individualized options.
- Call to schedule an appointment and for details on required documentation.
- Cost: Depends on services required

**Casa Clare- Apricity:**

*Provides a safe, supportive, residential environment for adult women with substance use disorders (Alcoholism and Drug Addiction). Offers evidence-based therapy approaches and individualized treatment plans.*

**Address and Location**

201 South Glenridge Court, Appleton, WI, 54914

**Contact Information**

- 920-731-3981
- Website: <https://www.apricityservices.com/>

**Hours of Operation**

24 hours/day, 7 days/week

**Important information**

- Medicaid covers only programming fees. Room and board is not covered and must be paid in advance for 30 day stay
- Eligibility requirements: Females over 18 years of age. Preferences given to Outagamie County residents.
- Call to schedule an appointment.



**Mooring House- Apricity:**

*Provides a safe, supportive residential environment for adult men with substance use disorders. Services include evidence based therapy approaches and individualized treatment plans.*

**Address and Location**

607 W Seventh St, Appleton, WI, 54911

**Contact Information**

- 920-731-3981
- Website: <https://www.apricityservices.com/>

**Hours of Operation**

24 hours/day, 7 days/week

**Important information**

- Medicaid covers only programming fees. Room and board is not covered and must be paid in advance for 30 day stay
- Eligibility requirements: Males over 18 years of age. Preferences given to Outagamie County residents.
- Call for more information. Room and board rate is \$50 per day and must be paid in advance for 30 day stay.



## Social Support Resources

Social support is a very important part of re-entry, and these Outagamie County resources can be utilized in order to give individuals a sense of support and belonging.

### Iris Place:

*Iris place, located in Appleton, provides a safe and welcoming environment that offers an opportunity for individuals experiencing emotional distress or crisis to grow and change through the support of others with lived experience.*

### Address and Location

1213 S Matthias St, Appleton, WI 54915



### Contact Information

- 920-815-3217
- Website: <https://www.namifoxvalley.org/iris-place/>

### Hours of Operation

Open 24 hours/day, 7 days/week

### Important information

- Free to all Wisconsin adults (18 & over), who want and need peer support to navigate emotional distress or crisis related to mental health and/or substance use.
  - Offers a short-term stay in a home-like healing environment.
  - Provides hope & healing through 24/7/365 peer support.
  - Is a self-directed, strengths-based, holistic respite.
- On Mondays through Wednesdays each week they also provide peer support over the phone through their “telephone warm line”.
- Guests may stay up to 7 nights if that’s their desired service.
- Must call prior to visitation.
- They do not offer clinical supports or services like medication or direct therapy.

## Appleton Visually Impaired Support Group

*The purpose of the visually impaired support group, the booklet, and its presence on the internet is to provide encouragement and direction to people effected either directly or indirectly by vision loss as well as for people that just wish to learn more about visual impairment.*

### Address and Location

425 N Linwood Ave., Appleton, WI, United States, Wisconsin



### Contact Information

- 920-955-3776
- Website: <https://sites.google.com/view/aplvisuallyimpaired/home?authuser=0>

### Hours of Operation

Tuesday 12:30PM-2:30PM

### Important information

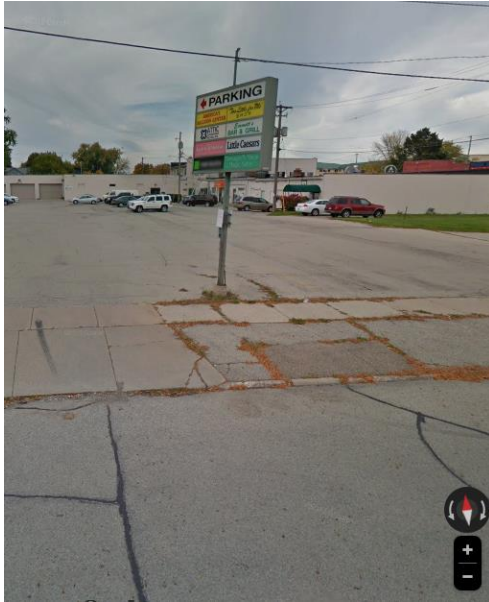
- The Appleton Visually Impaired Support Group will meet on the 2nd Tuesday of each month from 12.30 -2.30 p.m. in the meeting room.
- Everyone is welcome: your driver, spouse, caregiver, children included.
- Rod Maccoux is the current president of the group. Most meetings will have a speaker related to blind issues, safety, help available etc.

### **Attic Correctional Services**

*Conceives and develops more effective sanctions to enable offenders to avoid unnecessary levels of incarceration, satisfy community concerns for retribution and provide a setting which will facilitate treatment and the reduction of recidivism.*

### **Address and Location**

720 W Washington St., Appleton, WI, 54912



### **Contact Information**

- 920-830-1750
- Website: <https://correctionalservices.org/>

### **Hours of Operation**

Monday	8:00AM-4:00PM
Tuesday	8:00AM-4:00PM
Wednesday	8:00AM-4:00PM
Thursday	8:00AM-4:00PM
Friday	8:00AM-4:00PM

### **Important information**

- Call local office. Mot referrals are made through the Probation and Parole agents of the Department of Corrections

## **Other / Miscellaneous Resources**

These resources do not fit into one specific category and could be used to help individuals in Outagamie County after incarceration in a variety of ways.

### **Valley Transit**

*Provides non-emergency transportation for handicapped and elderly individuals in wheelchairs from institutions, hospitals and private residences for medical and social appointments.*

### **Address and Location**

801 S. Whitman Avenue Appleton, WI 54914

### **Contact Information**

- 920-955-3776
- Website: <https://myvalleytransit.com/valley-transit-two/>

### **Hours of Operation**

Monday	5:30am- 10:00pm
Tuesday	5:30am- 10:00pm
Wednesday	5:30am- 10:00pm
Thursday	5:30am- 10:00pm
Friday	5:30am- 10:00pm
Saturday	7:30am-10:00pm
Sunday	7:30am-2:00pm

### **Important information**

- The cost is a basic fee (curb to curb), \$4; Premium service, \$6, Sunday, \$11
- Eligibility: People with disabilities and the elderly for whom using the Valley Transit's fixed route system is difficult
- Persons with disabilities should contact Occupational Health Systems at 920-730-5337 for an ADA transportation certification. Seniors should contact Senior Connection at 920-731-1322 or Outagamie County Aging Services 930-832-5145 for certification appointment.

**Abuse/Crisis Intervention: Harbor House**

*Provides emergency shelter for victims of intimate partner violence and their children (domestic violence). Also offers 24-hour helpline, individual counseling and support groups for victims of domestic violence and their children, advocacy and legal information.*

**Address and Location**

720 West 5<sup>th</sup> St., Appleton, WI, 54914

**Contact Information**

- Main Office & Hotline: 920-832-1667
- Alternative Hotline: 800-970-1171
- Website: <https://www.harborhousewi.org/>

**Hours of Operation**

24 hours/day, 7 days/week

**Important information**

- How to apply: Call hotline at 920-832-1666
- Eligibility: Families and individuals experiencing domestic violence or loved ones of those experiencing domestic violence.